

STATE OF NEW HAMPSHIRE
PUBLIC EMPLOYEE LABOR RELATIONS BOARD



3C B

Executive Director:

Douglas L. Ingersoll, Esq.

Board Members:

Andrew Eills, Esq.
James M. O'Mara, Jr.
Carol M. Granfield
Richard J. Laughton, Jr.
Senator M. Hounsell
Peter Callaghan, Esq. (Alt.)
Glenn Brackett (Alt.)

November 8, 2017

His Excellency, Governor Christopher Sununu
and the Honorable Council
State House
Concord, New Hampshire 03301

REQUESTED ACTION

Accept the enclosed Biennial Report of the Public Employee Labor Relations Board.

EXPLANATION

I am filing the enclosed Biennial Report for the period July 1, 2015 to June 30, 2017 (FY 16 & 17) on behalf of the New Hampshire Public Employee Labor Relations Board pursuant to N.H. RSA 273-A:16, III and MOP 2500. More information about the PELRB is available at www.nh.gov/pelrb.

Respectfully,


Douglas L. Ingersoll, Esq.
Executive Director

Enclosure



State of New Hampshire

Biennial Report:

New Hampshire Public Employee Labor Relations Board

Report Date.....November 8, 2017
Statutory Basis for Report..... N.H. RSA 273-A:16, III
Reporting Period.....July 1, 2015 to June 30, 2017



State of New Hampshire

Table of Contents:

<u>Description:</u>	<u>Page:</u>
Transmittal Letter	1
Title Page	2
Organizational Chart	3
PELRB Functions and Organization	4
PELRB Board and Staff	7
Receipts and Expenditures	8
Docket Activity	9
Collective Bargaining Agreement Inventory	19



State of New Hampshire
Public Employee Labor Relations Board

Governor: **Christopher Sununu**

Executive Council:

District 1	Joseph D. Kenney
District 2	Andru Volinsky
District 3	Russell E. Prescott
District 4	Christopher C. Pappas
Distirct 5	David K. Wheeler

PELRB Board:

Chair	Andrew Eills, Esq. Peter Callaghan, Esq. (alt.)
-------	--

Management	Carol M. Granfield James M. O'Mara, Jr.
------------	--

Labor	Richard J. Laughton, Jr. Senator M. Hounsell Glenn Brackett (alt.)
-------	---

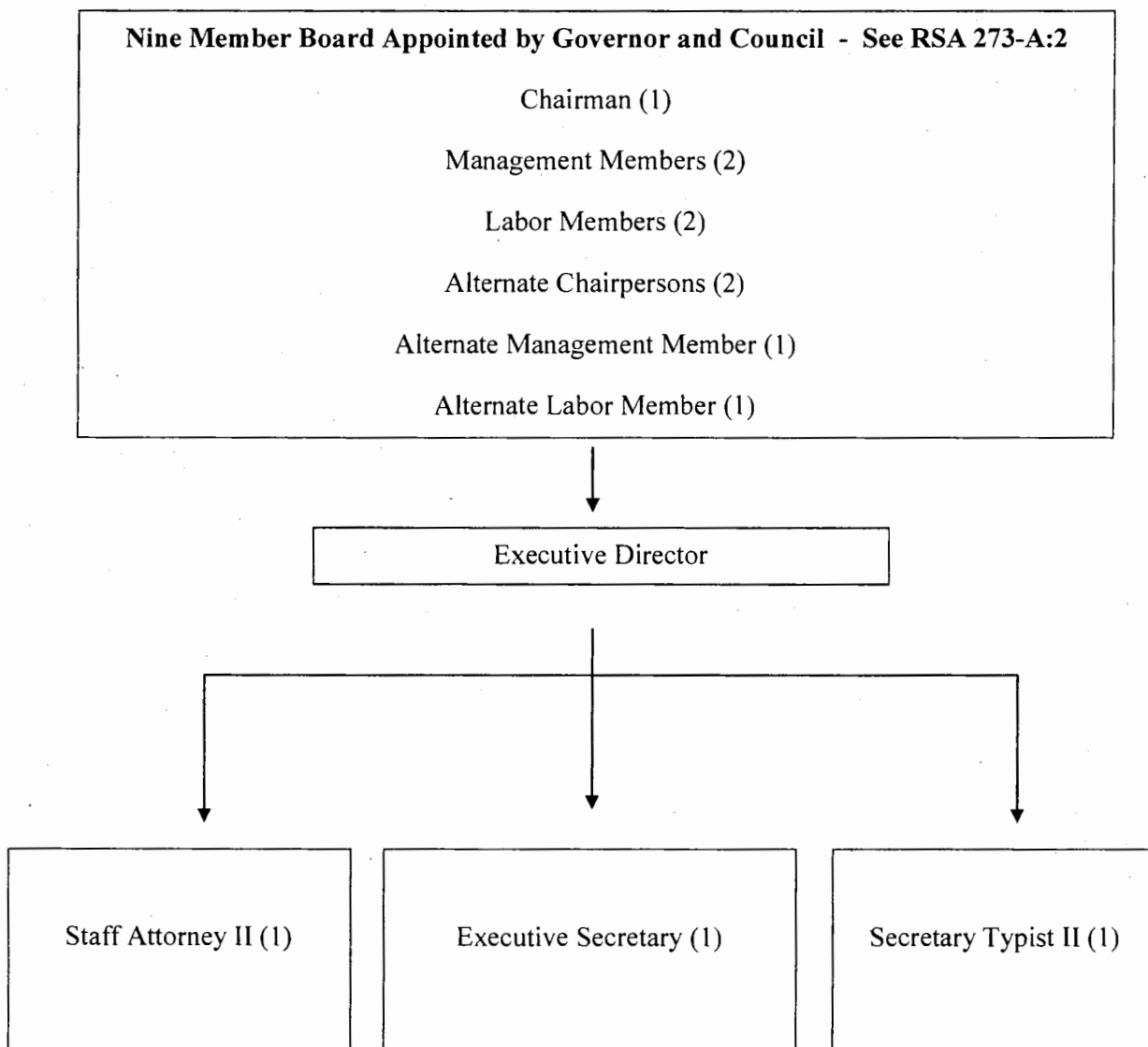
PELRB Executive Director: **Douglas L. Ingersoll, Esq.**



STATE OF NEW HAMPSHIRE

Organizational Chart

[New Hampshire Public Employee Labor Relations Board]





State of New Hampshire Public Employee Labor Relations Board

This Board was created pursuant to RSA 273-A in 1975 at a time when some public employees already engaged in collective bargaining and strikes and work stoppages were a concern. Strikes are prohibited under the current law, and public employees have had the statutorily protected right since 1975 to participate in the formation of bargaining units and engage in collective bargaining. The legislature stated that "*It is the policy of the state to foster harmonious and cooperative relations between public employers and their employees and to protect the public by encouraging the orderly and uninterrupted operation of government.*" The legislature effectuated this policy by: 1) recognizing the right of public employees to organize and be represented for the purpose of bargaining collectively with public employers such as the state, any political subdivision of the state, the university system but not the General Court; 2) requiring public employers to negotiate in good faith with certified employee representatives and reduce collectively bargained agreements to writing; and 3) establishing a public employee labor relations board with "broad powers to assist in resolving disputes between governments and its employees."

Administrative and Adjudicatory functions:

Bargaining Unit Formation and Determination of Representative:

Certification petitions are processed which seek recognition of proposed bargaining units. These may require adjudicatory hearings to resolve bargaining unit composition issues. The certified exclusive representative of appropriate bargaining units is determined through the written majority authorization or secret ballot election process.

Changes to existing bargaining units:

Modification petitions are processed to resolve proposed changes in the composition of previously certified bargaining units and may involve contested adjudicatory hearings.

Representation challenges:

Decertification petitions and challenge petitions are processed which seek to resolve through secret ballot elections questions of representation of existing bargaining units and whether bargaining unit employees wish to continue with statutory collective bargaining through secret ballot elections. Contested adjudicatory hearings may be necessary.

Elections:

Secret ballot elections are conducted by mail or on site at various public employer locations throughout the state to resolve questions of representation of bargaining units.

Unfair Labor Practice Complaints:

Unfair Labor Practice complaints are processed which seek to address alleged violations of RSA 273-A:5, I or II. Pre-hearing conferences and contested adjudicatory proceedings are typically required to determine whether a particular respondent has violated a provision(s) of RSA 273-A:5.

Declaratory Rulings:

Petitions for a declaratory ruling are processed pursuant to Pub 206.01 regarding the specific applicability of any statute within the jurisdiction of the board to enforce, or any rule or order of the board.

Hearings:

RSA 273-A mandates the conduct of a hearing within 45 days of the filing date for unfair labor practice complaints. Representation and other petitions follow a similar time line. Hearings involve sworn testimony, exhibits, as well as written and oral argument. These proceedings may involve two to three parties, their representatives, multiple witnesses, observers, as well as PELRB staff and board members.

Decisions:

The PELRB issues comprehensive written decisions in contested cases inclusive of factual findings, legal rulings, and orders for relief if applicable. Per RSA 273-A, decisions on unfair labor practice complaints typically issue within 45 days of the date the record for decision is complete. A similar timeline is followed for representation and other petitions. Decisions are subject to a PELRB review process pursuant to Pub 205 and final PELRB decisions are subject to appeal to the New Hampshire Supreme Court. All decisions dating to 1976 are available on the PELRB website.

Rulemaking:

The PELRB files rulemaking petitions as necessary to implement the provisions of RSA 273-A. This involves the conduct of related public hearings and proceedings, and the presentation of proposed rule changes to the Joint Legislative Committee on Administrative Rules (JLCAR).

Neutral appointments:

The board maintains a list of neutrals per RSA 273-A:2, V who serve as impasse mediators, factfinders, and/or grievance arbitrators.

Collective bargaining:

Parties to the negotiating process are required to bargain in good faith, which means they must meet at reasonable times and places with the good faith intention to discuss bargaining proposals for the purpose of reaching agreement and finalizing a tentative agreement whose costs are subject to final approval by the local legislative body. Parties must file their collective bargaining agreements with the PELRB and the PELRB publishes all filed contracts on the PELRB website.

Website development and maintenance:

The board maintains a website which contains comprehensive and current information about applicable laws, rules, procedures, decisions, bargaining unit certifications and collective bargaining agreements. The website serves as a resource frequently used by public employers, public employees, employee organizations, and the public to conduct legal research and learn more about PELRB procedures, and reduces the amount of time dedicated to staff responses to public inquiries.

RSA 273-C:

In 1990 the legislature enacted RSA 273-C and authorized proceedings before the PELRB relating to the right of employees of licensed dog or horse racing track owners to form bargaining units and engage in collective bargaining. This law accounts for a relatively small percentage of PELRB activity.

Electronic Filing and Docket Maintenance:

PELRB operations are based upon a basic but effective electronic filing and case management system, established without dedicated software, which facilitates and expedites filings made with the PELRB, the issuance of decisions, and internal management of case files, docket material, and general systems.



State of New Hampshire

PELRB Board Members:

Chair

Andrew Eills, Esq.
[Term Expires February 13, 2022]

Peter Callaghan, Esq. (alt.)
[Term Expires February 13, 2022]

Management

Carol M. Granfield
[Term Expires October 15, 2020]

James M. O'Mara, Jr.
[Term Expires September 17, 2022]

Labor

Richard J. Laughton, Jr.
[Term Expires October 2, 2021]

Mark Hounsell
[Term Expires October 29, 2019]

Glenn Brackett
[Term Expires December 6, 2021]

PELRB Classified Employees (4):

Executive Director (1)
Staff Attorney/Hearing Officer (1)
Executive Secretary (1)
Secretary Typist II (1)

Summary, Receipts and Expenditures, Fiscal Years 2016 and 2017

Receipts		
Description	FY 2016	FY 2017
Unfair Labor Practice Fees and Misc.	1740	1200
Expenditures		
Description	FY 2016	FY 2017
Personal Services & Benefits	360797	380635
Rents-(2 1/2 Beacon St & Copier)	37425	37425
Current Expenses	3146	2665
Transfers to DoIT	936	94
Telecommunications	3140	3170
Shared Services Support	630	616
In State Travel Reimbursement	1198	1377
Total:	407272	425982

Overview of PELRB Docket, FY 2016-2017

Category	FY 2017	FY 2016	Total
Decisions Issued	250	279	529
Cases Closed	115	118	233
Unfair Labor Practice Complaints	21	30	51
Certification Petitions	21	16	37
Elections Held	11	15	26
New Bargaining Units	4	11	15
Modification Petitions	49	34	83
Mediation Petitions	3	4	7
Arbitration Petitions	17	28	45
Fact Finding Petitions	3	2	5

**FY2016 Docket – Unfair Labor Practice, Declaratory Ruling,
Certification, and Modification Cases**

AFSCME Council 93 Carroll County Nursing Home
AFSCME Council 93, Local 365, Nashua Custodial/Janitorial Staff Nashua School District
AFSCME Council 93, Local 3685, Carroll County Nursing Home Employees Carroll County Nursing Home
AFSCME Local 1801, Pelham Public Works & Municipal Employees Town of Pelham
AFSCME Local 2715, Hillsborough County Nursing Home Employees Hillsborough County Nursing Home
AFSCME Local 3657, Hillsborough County Sheriff's Office Hillsborough County Sheriff's Office
AFSCME Local 3657, Weare Police Employees Town of Weare
Alton Teacher's Association/NEA-NH Alton School Board
Andover Education Support Staff/NEA-NH/NEA Andover School District
Ashland Teachers Association, NEA-NH Ashland School Board Ashland Teachers' Association
Bedford Teachers Association, Affiliated with NEA-NH Bedford School District, SAU #25
Belknap County Commissioners Teamsters Local 633 of New Hampshire
Brotherhood of Salem Firefighters, Local 2892 Town of Salem
City of Concord United Auto Workers Union, Local 2322 (Clerical & Technical Employees)
City of Nashua International Union - UAW, Local 2322 (Professional Unit)
Concord Police Patrolmen's Association City of Concord
Contoocook Valley Education Association, NEA-NH Contoocook Valley School District
Conway Administrators & Directors Association Conway School District
Daniel O'Donnell Nashua School District
Derry Education Association/NEA-NH Derry School District
Education Association of Pembroke, NHEA/NEA Pembroke School District

**FY2016 Docket – Unfair Labor Practice, Declaratory Ruling,
Certification, and Modification Cases**

Epping School District Epping Education Association/NEA-NH
Hollis Education Support Staff Association, NEA-NH Hollis School District/Hollis-Brookline Cooperative School District
Keene Education Association, NEA-NH Keene School District
Keene Paraprofessionals Association, NEA-NH Keene School District
Keene State College Administrative Staff Association, NEA-NH Keene State College
Keene State College Directors & Supervisors Association Keene State College
Keene State College Staff Association, NEA-NH Keene State College
Lebanon Permanent Firefighters' Association City of Lebanon
Litchfield Support Staff, NEA-NH Litchfield School District
Londonderry Police Department AFSCME Local 3657
Lyme School District Lyme Education Association, Affiliated with NHEA/NEA
Manchester Education Association, NEA Manchester School District
Mascenic Education Association, NEA-NH Mascenic Regional School District
Moultonborough Schools Staff Association, Affiliated with NEA-NH Moultonborough School District
NEPBA (Weare Police Employees) Town of Weare
New England Police Benevolent Association, Local 295 Strafford County Sheriff's Office
New Hampshire Retirement System State Employees Association of New Hampshire, Inc., SEIU Local 1984
New Hampshire State Police Command Staff, New Hampshire Troopers Association State of New Hampshire, Department of Safety, Division of State Police
New Hampshire Trooper Association State of NH, Department of Safety, Division of State Police
Newmarket Teachers Association Affiliated with NHEA-NEA Newmarket School District
Pittsfield Town Employees, AFT Local #6214, AFT-NH, AFL-CIO Town of Pittsfield
Plymouth State University - AAUP Plymouth State University

**FY2016 Docket – Unfair Labor Practice, Declaratory Ruling,
Certification, and Modification Cases**

Portsmouth City Employees, Local 1386, AFSCME, AFL-CIO City of Portsmouth
Professional Fire Fighters of Hanover, Local 3288, IAFF Town of Hanover Fire Department
Professional, Administrative and Technical Employees of Derry, SEIU Local 1984 Town of Derry
Prospect Mountain High School Teachers' Association, NEA-NH Prospect Mountain High School Board
Robert Peters, Town of Weare, Dept. of Public Works Teamsters Local 633
Salem Education Association, NEA-NH Salem School District, SAU #57
Salem Public Administrators Association Town of Salem
SEA/SEIU Local 1984, Belknap County Sheriff's Department Belknap County Commissioners
State Employees' Association of New Hampshire, Inc., SEIU Local 1984 State of New Hampshire, Liquor Commission
State Employees' Association of New Hampshire, SEIU Local 1984 State of New Hampshire
State Employees' Association of NH, Inc., Local 1984 State of New Hampshire, Department of Safety, Bureau of Emergency Communications
State Employees' Association of NH, Inc., SEIU Local 1984 (Office of Professional Licensure & Certification) State of New Hampshire
State Employees' Association of NH, Inc., SEIU Local 1984 County of Merrimack National Correctional Employees Union, Inc.
State Employees' Association of NH, SEIU Local 1984 City of Laconia
State Employees' Association of NH, SEIU Local 1984 State of New Hampshire, Department of Health & Human Services
State Employees' Association of NH, SEIU Local 1984, Ashland Town Employees Town of Ashland
Strafford Education Association/NEA-NH Strafford School District
Strafford School District Strafford Education Association/NEA-NH
Stratham Paraprofessionals Association, NEA-NH SAU #16, Stratham School District
Sugar River Education Association, NEA-NH Claremont School Board
Teamsters Local 633 (Keene State College Campus Safety Employees) Keene State College

**FY2016 Docket – Unfair Labor Practice, Declaratory Ruling,
Certification, and Modification Cases**

Teamsters Local 633 of New Hampshire Belknap County Commissioners SEA/SEIU Local 1984, Belknap County Sheriff's Department
Teamsters Local 633 of New Hampshire Town of Atkinson Police Department
Teamsters Local 633 of NH, Manchester Police Department Support Staff City of Manchester
Teamsters Local 633 Belknap County
Teamsters Local 633 Cheshire County Department of Corrections
Teamsters Local 633 Cheshire County Sheriff's Office
Teamsters Local 633 Manchester School District, SAU 37
Teamsters Local 633/Plaistow Town Employees Town of Plaistow
Town of Gilford AFSCME Council 93, Local 534, Gilford Public Works Employees
UNH Law Faculty Union University System of New Hampshire
United Steelworkers of America Manchester Water Works
Wakefield Education Association/NEA-NH Wakefield School District
Winchester School District Winchester Teachers' Association
Winchester Support Staff Association, NEA-NH Winchester School District
Windham School District, SAU #95 Windham Education Association, Affiliated with NHEA/NEA

**FY2017 Docket – Unfair Labor Practice, Declaratory Ruling,
Certification, and Modification Cases**

AFSCME Council 93 (Local 1580, Hooksett DPW Employees) Town of Hooksett
AFSCME Council 93, Local 365, Nashua Custodial/Janitorial Staff Nashua School District
AFSCME Council 93, Local 3657 Town of Northfield
AFSCME Local 3657 & Londonderry Administrative Employees Association, Affiliated with AFSCME Council 93 (Public Safety Administrative Employees) Town of Londonderry
AFSCME Local 3657, Hillsborough County Sheriff's Office Hillsborough County
Alton Teacher's Association, NEA-NH Alton School Board
Association (Weare Police Employees) Town of Weare
Auburn Education Association/NEA-New Hampshire Auburn School District
Bedford Educational Personnel Association, NEA-New Hampshire Bedford School District
Bethlehem Educational Support Personnel, NEA-NH Bethlehem School District
Brian Hastings Conway Administrators and Directors Association Conway School District
Candia Education Support Professionals Association, NEA-NH Candia School District
Chesterfield School District Chesterfield Support Staff Association/NEA-NH
City of Concord AFSCME Local 1580, Concord City Employees
City of Concord United Auto Workers Union, Local 2322 (Clerical & Technical Employees)
City of Lebanon Lebanon Permanent Firefighters' Association
City of Somersworth Somersworth Professional Administrator's Association, Affiliated with International Union of Public Employees, Inc.
Concord Fire Officers' Association City of Concord
Concord Fire Officers' Association City of Concord
Concord School District Concord Education Association, NEA-NH

**FY2017 Docket – Unfair Labor Practice, Declaratory Ruling,
Certification, and Modification Cases**

Dover Professional Employees Association City of Dover
Geri Lawton et al. John Stark Regional School District, SAU #24 John Stark Support Personnel Association/NEA-New Hampshire
Group of Employees Town of Hooksett AFSCME Council 93, Local 1580
Henniker Community School Support Staff, AFT Local #6314, AFT-NH, AFL-CIO Henniker School Board
Hillsborough Town Employees, AFT Local #3912, AFT-NH, AFL-CIO Town of Hillsborough
Hollis Education Association, NEA-NH Hollis School District/Hollis-Brookline Cooperative School District
Hooksett Education Association/NEA-NH Hooksett School District
International Brotherhood of Teamsters, Local 633 of N.H. State of New Hampshire, Administrative Office of the Courts
Keene School District Keene Association of Principals & Supervisors
Keene State College Administrative Staff Association, NEA-NH, et. al. Keene State College
Laconia Patrolman Association affiliated with New England Police Benevolent Association City of Laconia Police Department
Manchester Education Association, NEA-NH Manchester School District
Manchester Educational Support Personnel Association/NEA-NH Manchester School District
Manchester School District Manchester Education Association/NEA
Monadnock District Education Association, NEA-NH Monadnock Regional School District
Nashua Association of School Administrators & Supervisors Nashua School District
National Correctional Employees Union Grafton County, Department of Corrections
National Correctional Employees Union Hillsborough County Department of Corrections
National Correctional Employees Union Hillsborough County Department of Corrections AFSCME Local 3657, Hillsborough County Department of Corrections Employees
National Correctional Employees Union Hillsborough County Department of Corrections Teamsters Local 633 of New Hampshire

**FY2017 Docket – Unfair Labor Practice, Declaratory Ruling,
Certification, and Modification Cases**

National Correctional Employees Union Merrimack County Department of Corrections State Employees' Association of New Hampshire, Inc., SEIU Local 1984
National Correctional Employees Union Rockingham County Department of Corrections
National Correctional Employees Union Sullivan County, Department of Corrections
NEA-New Hampshire SAU 35 – Profile High School
NEPBA, Auburn Police Union Town of Auburn
NEPBA, Inc., Local 40 (Fish & Game); Local 45 (Fish & Game); Local 260 (Liquor Commission); Local 270 (Probation & Parole); Local 265 (Probation & Parole) State of New Hampshire
New England Police Benevolent Association City of Claremont AFSCME Local 3657, Claremont Police Association
New England Police Benevolent Association Rockingham County Sheriff's Office
New England Police Benevolent Association Town of Newington, Police Commission
New England Police Benevolent Association, Auburn Police Union Town of Auburn, Police Commission
New Hampshire Higher Education Union Community College System of New Hampshire State Employees' Association of New Hampshire, SEIU Local 1984
New Hampshire Troopers Association State of New Hampshire, Department of Safety, Division of State Police
Oyster River Bus Drivers' Association, Affiliated with International Union of Operating Engineers, Local 877, AFL-CIO Oyster River Cooperative School District
Pittsfield Town Employees, AFT Local #6214, NHFT, AFL-CIO Town of Pittsfield
Portsmouth Police Patrolmen's Union, NEBPA Local 11 City of Portsmouth
Professional, Administrative, and Technical Employees of Derry Town of Derry
Prospect Mountain High School Teachers' Association, NEA-NH Prospect Mountain High School Board
Raymond Educational Support Staff, AFT Local 4823, AFT-NH, AFL-CIO Raymond School District
Salem Educational Personnel Association, NEA-NH Salem School District, SAU #57

**FY2017 Docket – Unfair Labor Practice, Declaratory Ruling,
Certification, and Modification Cases**

Salem Educational Support Personnel Association, NEA-NH Salem School District, SAU #57
SEA of NH, Inc., SEIU Local 1984 NEPBA, Inc. Local 40 (Fish & Game) et. al. State of New Hampshire
SEA/SEIU Local 1984 Community College System of New Hampshire (Adjunct Faculty)
Seabrook Police Association affiliated with Teamsters Local 633 of New Hampshire Town of Seabrook
Somersworth Professional Administrator's Association Affiliated with International Union of Public Employees, Inc. City of Somersworth
State Employees' Association of New Hampshire, Inc., SEIU Local 1984 Merrimack County Department of Corrections
State Employees' Association of New Hampshire, Inc., SEIU Local 1984 Merrimack County Dept. of Corrections National Correctional Employees Union, Inc.
State Employees' Association of New Hampshire, SEIU Local 1984 State of New Hampshire
State Employees' Association of NH, SEIU Local 1984 State of New Hampshire, Department of Health and Human Services
State of New Hampshire, Department of Safety, Division of State Police New Hampshire State Police Command Staff, New Hampshire Troopers Association
State of New Hampshire, Office of Employment and Training State Employees' Association of New Hampshire, Inc., SEIU Local 1984
State of NH, Bank Commission State Employees' Association of NH, SEIU Local 1984
State of NH, Dept. of Agriculture State Employees' Association of NH, SEIU Local 1984
State of NH, Dept. of Education State Employees' Association of NH, SEIU Local 1984
State of NH, Dept. of Health & Human Services State Employees' Association of NH, SEIU Local 1984
State of NH, Dept. of Health & Welfare (Health & Human Services) State Employees' Association of NH, SEIU Local 1984
State of NH, Dept. of Resources & Economic Development State Employees' Association of NH, SEIU Local 1984
State of NH, Dept. of Safety State Employees' Association of NH, SEIU Local 1984
State of NH, Dept. of Transportation State Employees' Association of NH, SEIU Local 1984
State of NH, Office of Information Technology State Employees' Association of NH, SEIU Local 1984

**FY2017 Docket – Unfair Labor Practice, Declaratory Ruling,
Certification, and Modification Cases**

Sugar River Education Association, NEA-NH Claremont School Board
Teamsters Local 633 of New Hampshire Town of Merrimack, Public Works Department
Teamsters Local 633 of New Hampshire/Plaistow Police Association Town of Plaistow (Police Department)
Teamsters Local 633 Cheshire County Sheriff's Office
Teamsters Local Union 633 of New Hampshire Rockingham County Department of Corrections
Teamsters Local Union 633 State of New Hampshire, Department of Corrections
Timberlane Teachers' Association, NHFT, AFT, AFL-CIO Timberlane Regional School District
Town of Derry Professional, Administrative & Technical Employees of Derry, SEIU Local 1984
Town of Seabrook Seabrook Firefighters, IAFF #2847
United Auto Workers Union, Local 2232 (Clerical & Technical Employees) City of Concord
United Steelworkers of America City of Manchester Department of Water Works
University System of New Hampshire, Health Services Association, NEA-NH University of New Hampshire
University System of New Hampshire, Operating Staff Association University System of New Hampshire
University System of New Hampshire, Professional, Administrative and Technical Employees, NEA-NH University System of New Hampshire

Current (non-expired) Collective Bargaining Agreements as of June, 2017

1	AAUP	University of NH - Lecturers
2	AAUP	University of NH - Professors
3	AFSCME	Amherst Police
4	AFSCME	Belmont Town Employees (Public Works)
5	AFSCME	Belmont Town Employees (Police & Fire)
6	AFSCME	Berlin Police
7	AFSCME	Berlin Public Works & Recreation
8	AFSCME	Berlin School Custodians & Bus Drivers
9	AFSCME	Berlin Water Works
10	AFSCME	Brookline Police
11	AFSCME	Canaan Police Employees
12	AFSCME	Carroll County - Mountain View Nursing Home
13	AFSCME	Cheshire County Nursing Home (Maplewood)
14	AFSCME	Claremont City Support Staff
15	AFSCME	Claremont Police
16	AFSCME	Claremont Public Works
17	AFSCME	Concord Public Works
18	AFSCME	Conway Public Works
19	AFSCME	Conway School Employees
20	AFSCME	Derry Town Administrative Support Staff
21	AFSCME	Derry School Educational Assistants
22	AFSCME	Dover Public Works
23	AFSCME	Durham Public Works
24	AFSCME	Franklin School Custodians
25	AFSCME	Franklin School Support Staff
26	AFSCME	Gilford Public Works Employees
27	AFSCME	Gorham Police
28	AFSCME	Hanover Dresden School Custodians
29	AFSCME	Hanover Public Works
30	AFSCME	Hillsborough County Nursing Home
31	AFSCME	Hollis Public Safety Employees
32	AFSCME	Hollis Town Employees
33	AFSCME	Hollis Police
34	AFSCME	Hooksett Public Works
35	AFSCME	Hudson Administration & Support Staff
36	AFSCME	Hudson Police
37	AFSCME	Hudson Public Works
38	AFSCME	Hudson School Department Heads
39	AFSCME	Jaffrey Police
40	AFSCME	Jaffrey Public Works
41	AFSCME	Keene Public Works
42	AFSCME	Keene School Custodians
43	AFSCME	Laconia Public Works
44	AFSCME	Lebanon Public Works
45	AFSCME	Litchfield Police
46	AFSCME	Littleton Town Employees

Current (non-expired) Collective Bargaining Agreements as of June, 2017

47	AFSCME	Londonderry School Custodians
48	AFSCME	Londonderry School Support Staff
49	AFSCME	Londonderry Town Employees
50	AFSCME	Londonderry (Town) Administrative Employees
51	AFSCME	Manchester Housing Authority
52	AFSCME	Merrimack Public Safety Officers
53	AFSCME	Merrimack Public Works
54	AFSCME	Milford Police
55	AFSCME	Nashua Housing Authority
56	AFSCME	Nashua Public Works
57	AFSCME	Newport Police
58	AFSCME	Newport Public Works
59	AFSCME	Ossipee Town Employees
60	AFSCME	Pelham Firefighters, Public Works & Municipal Employees
61	AFSCME	Pelham Police
62	AFSCME	Plymouth Police & Fire
63	AFSCME	Portsmouth City Employees
64	AFSCME	Portsmouth Non-Supervisory Cafeteria Employees
65	AFSCME	Portsmouth School Custodians
66	AFSCME	Raymond Town Employees
67	AFSCME	Rochester Public Works
68	AFSCME	Rochester School Buildings & Grounds
69	AFSCME	Salem Public Works
70	AFSCME	Seabrook Town Supervisors
71	AFSCME	Sullivan County Nursing Home
72	AFSCME	Windham Police
73	AFSCME	Windham School Assistants (Instructional Assistants)
74	AFSCME	Windham School Paraprofessional Employees
75	AFSCME	Windham Support Staff-Town
76	AFSCME	Winnisquam School Custodians
77	AFT	Barnstead Educational Support Team
78	AFT	Campton Education Support Personnel
79	AFT	Ellis School Support Staff
80	AFT	Farmington School Custodians
81	AFT	Fremont-Ellis School Support Staff
82	AFT	Henniker Support Staff Association
83	AFT	Hillsboro Deering Federation of Teachers
84	AFT	Hillsboro-Deering Support Staff
85	AFT	Hillsborough Town Employees
86	AFT	Hudson Federation of Teachers
87	AFT	Hudson Paraprofessionals & Cafeteria
88	AFT	Hudson School Secretaries
89	AFT	Keene City Employees
90	AFT	Keene Police
91	AFT	Keene Police Supervisors
92	AFT	Nashua Public Library

Current (non-expired) Collective Bargaining Agreements as of June, 2017

93	AFT	Nashua Teachers Union
94	AFT	Nashua Teachers Union, Unit D (Food Service)
95	AFT	Nashua Teachers Union, Paraprofessionals
96	AFT	Nashua Teachers Union, Secretaries
97	AFT	Oyster River School Paraprofessional & Support Staff
98	AFT	Pittsfield Town Employees
99	AFT	Raymond Education Support Staff
100	AFT	Rochester Federation of Teachers
101	AFT	Rochester School Food Service
102	AFT	Rochester School Paraprofessionals
103	AFT	Weare Education Support Staff
104	AFT	Timberlane School Support Staff
105	AFT	Timberlane Teachers Association
106	ATU	Manchester Transit Authority
107	IAFF	Berlin Firefighters
108	IAFF	Claremont Firefighters
109	IAFF	Concord Fire Officers
110	IAFF	Concord Firefighters
111	IAFF	Derry Firefighters
112	IAFF	Derry Fire Officers
113	IAFF	Dover Fire Officers
114	IAFF	Dover Firefighters
115	IAFF	Durham Firefighters
116	IAFF	Exeter Professional Firefighters
117	IAFF	Goffstown Professional Firefighters
118	IAFF	Hampton Fire Officers
119	IAFF	Hampton Firefighters
120	IAFF	Hooksett Firefighters
121	IAFF	Hudson Firefighters
122	IAFF	Laconia Professional Firefighters
123	IAFF	Lebanon Firefighters
124	IAFF	Londonderry Firefighters
125	IAFF	Merrimack Firefighters
126	IAFF	Nashua Firefighters
127	IAFF	North Hampton Firefighters
128	IAFF	Pelham Firefighters
129	IAFF	Portsmouth Firefighters
130	IAFF	Rye Firefighters
131	IAFF	Salem Firefighters
132	IAFF	Windham Firefighters
133	ICWU	Hillsborough County Nursing Home Supervisors
134	ICWU	Merrimack County Nursing Home
135	Independent	Ashland Teachers Association
136	Independent	Chichester Teachers' Education Association
137	Independent	Claremont Association of Paraprofessionals
138	Independent	Claremont School Administrators

Current (non-expired) Collective Bargaining Agreements as of June, 2017

139	Independent	Claremont Association of Maintenance and Transportation Employees
140	Independent	Concord Police Patrolmen
141	Independent	Concord Police Supervisors
142	Independent	Concord School Administrators
143	Independent	Concord School Maintenance & Transportation Employees
144	Independent	Dover Municipal Employees
145	Independent	Dover Police Association
146	Independent	Dover Police Administrators
147	Independent	Dover Professional Employees Association
148	Independent	Durham Professional Municipal Managers
149	Independent	Exeter Police
150	Independent	Hampton Police
151	Independent	Hampton Police Sergeants Unit
152	Independent	Hudson Fire, Police & Town Supervisors
153	Independent	Keene Fire Supervisors
154	Independent	Keene Firefighters
155	Independent	Laconia Police
156	Independent	Lebanon Administrators (School)
157	Independent	Lebanon School Secretaries
158	Independent	Londonderry Allied Health Professionals (School)
159	Independent	Milford Administrative Group
160	Independent	Monadnock School Specialists
161	Independent	Nashua Police Patrolman's
162	Independent	Nashua Principals
163	Independent	Newington Firefighters
164	Independent	Oyster River School Bus Drivers
165	Independent	Plymouth Regional Educators' Association
166	Independent	Portsmouth Fire Officers
167	Independent	Portsmouth Police Civilian Employees
168	Independent	Portsmouth Police Ranking Officers
169	Independent	Portsmouth Professional Management Association
170	Independent	Portsmouth School Custodial Supervisors
171	Independent	Portsmouth Supervisory Management Alliance
172	Independent	Rochester Middle Management Group
173	Independent	Rochester Municipal Employees Association
174	Independent	Rochester Municipal Managers Group
175	Independent	Salem Public Administrators Association
176	Independent	Salem School Custodians Employees Association
177	NCEU	Carroll County Corrections
178	NCEU	Hillsborough County Corrections
179	NCEU	Merrimack County Corrections
180	NCEU	Rockingham County Corrections
181	NEA-NH	Allenstown Education Association
182	NEA-NH	Allenstown Paraprofessional Association
183	NEA-NH	Alton Teachers Association
184	NEA-NH	Amherst Education Association

Current (non-expired) Collective Bargaining Agreements as of June, 2017

185	NEA-NH	Amherst Support Staff Association
186	NEA-NH	Andover Education Association
187	NEA-NH	Auburn Education Association
188	NEA-NH	Barnstead Education Association
189	NEA-NH	Barrington Education Association
190	NEA-NH	Barrington Paraprofessional Association
191	NEA-NH	Bartlett Education Association
192	NEA-NH	Bedford Education Association
193	NEA-NH	Bedford Educational Personnel Association
194	NEA-NH	Bedford Educational Support Staff
195	NEA-NH	Berlin Education Association
196	NEA-NH	Berlin Educational Support Staff
197	NEA-NH	Bethlehem Education Association
198	NFA-NH	Bethlehem Educational Support Personnel
199	NEA-NH	Bow Education Association
200	NEA-NH	Bow Education Support Staff
201	NEA-NH	Brentwood Teachers Association
202	NEA-NH	Brookline Education Support Staff
203	NEA-NH	Brookline Teachers Association
204	NEA-NH	Campton Association of Educators
205	NEA-NH	Candia Education Association
206	NEA-NH	Candia Education Support Professionals Association
207	NEA-NH	Chester Education Association
208	NEA-NH	Chester Educational Support Staff
209	NEA-NH	Chesterfield Education Association
210	NEA-NH	Chesterfield School Support Staff
211	NEA-NH	Claremont Teachers (Sugar River Education Association)
212	NEA-NH	Claremont School Secretaries
213	NEA-NH	Colebrook Education Association
214	NEA-NH	Concord Education Association
215	NEA-NH	Concord Educational Office Personnel
216	NEA-NH	Concord School Educational Assistants
217	NEA-NH	Concord School Tutors
218	NEA-NH	Contoocook Valley Education Association
219	NEA-NH	Conway Education Association
220	NEA-NH	Conway Education Support Personnel
221	NEA-NH	Cornish Education Association
222	NEA-NH	Deerfield Education Association
223	NEA-NH	Deerfield Paraeducators Association
224	NEA-NH	Derry Education Association
225	NEA-NH	Dover Educational Office Personnel
226	NEA-NH	Dover Para-educators
227	NEA-NH	Dover Teachers Union
228	NEA-NH	Dunbarton Education Association
229	NEA-NH	East Kingston Teachers
230	NEA-NH	Epping Education Association

Current (non-expired) Collective Bargaining Agreements as of June, 2017

231	NEA-NH	Epping Paraprofessional Association
232	NEA-NH	Epsom School Support Staff
233	NEA-NH	Epsom Teachers
234	NEA-NH	Exeter Paraprofessionals Association
235	NEA-NH	Exeter Cooperative Paraprofessionals Association
236	NEA-NH	Exeter Cooperative Teachers
237	NEA-NH	Exeter Education Association
238	NEA-NH	Fall Mountain Educational Support Personnel
239	NEA-NH	Fall Mountain Teachers
240	NEA-NH	Farmington Education Support Professionals
241	NEA-NH	Farmington Teachers Association
242	NEA-NH	Franklin Education Association
243	NEA-NH	Freedom Employees Association (Teachers)
244	NEA-NH	Fremont Education Association
245	NEA-NH	Gilford Education Association
246	NEA-NH	Gilmanton Education Association
247	NEA-NH	Goffstown Education Association
248	NEA-NH	Goffstown School Support Staff
249	NEA-NH	Gorham Cooperative Teachers Association
250	NEA-NH	Gorham-Randolph Shelburne Cooperative Teachers Association
251	NEA-NH	Gorham Randolph Shelburne Cooperative Support Staff
252	NEA-NH	Gorham School Support Staff
253	NEA-NH	Goshen Lempster Teachers Association
254	NEA-NH	Governor Wentworth Administrative Team
255	NEA-NH	Governor Wentworth Education Association
256	NEA-NH	Governor Wentworth Support Staff
257	NEA-NH	Grantham Education Association
258	NEA-NH	Greenland Coastal Teachers
259	NEA-NH	Groveton Support Staff
260	NEA-NH	Groveton Teachers Association
261	NEA-NH	Hampstead Association of School Staff
262	NEA-NH	Hampstead Education Association
263	NEA-NH	Hampstead Support Personnel Association
264	NEA-NH	Hanover Education Association
265	NEA-NH	Hanover School Support
266	NEA-NH	Harrisville Education Association
267	NEA-NH	Haverhill Co-op Education Association
268	NEA-NH	Haverhill Co-op School Support
269	NEA-NH	Henniker Teachers Association
270	NEA-NH	Hinsdale Federation of Teachers
271	NEA-NH	Hinsdale Support Staff Association
272	NEA-NH	Holderness Education Association
273	NEA-NH	Holderness Support Staff
274	NEA-NH	Hollis Education Association
275	NEA-NH	Hollis Education Support Staff
276	NEA-NH	Hollis/Brookline Cooperative Education Association

Current (non-expired) Collective Bargaining Agreements as of June, 2017

277	NEA-NH	Hollis/Brookline Education Support Staff
278	NEA-NH	Hooksett Education Association
279	NEA-NH	Hooksett Support Professional Association
280	NEA-NH	Hopkinton Education Association
281	NEA-NH	Hopkinton Educational Support Staff
282	NEA-NH	Inter Lakes Education Association
283	NEA-NH	Inter Lakes Support Staff Association
284	NEA-NH	Jaffrey-Rindge Education Association
285	NEA-NH	Jaffrey-Rindge Support Staff
286	NEA-NH	John Stark Support Personnel
287	NEA-NH	Kearsarge Education Association
288	NEA-NH	Kearsarge Para-Educators Association
289	NEA-NH	Keene Association of Principals & Supervisors
290	NEA-NH	Keene Education Association
291	NEA-NH	Keene Paraprofessionals Association
292	NEA-NH	Keene State College Adjunct Association
293	NEA-NH	Keene State College Education
294	NEA-NH	Keene Tutors, Association of
295	NEA-NH	Kensington Education Association
296	NEA-NH	Laconia Education Association
297	NEA-NH	Laconia Educational Assistants
298	NEA-NH	Laconia School Support Staff
299	NEA-NH	Lafayette Education Association
300	NEA-NH	Lebanon Education Association
301	NEA-NH	Lebanon School Support Staff
302	NEA-NH	Lempster Education Association
303	NEA-NH	Lin-Wood Education Association
304	NEA-NH	Lisbon School Paraprofessionals
305	NEA-NH	Lisbon Teachers Association
306	NEA-NH	Litchfield Education Association
307	NEA-NH	Littleton School Support Staff
308	NEA-NH	Littleton Teachers
309	NEA-NH	Londonderry Education Association
310	NEA-NH	Lyme Education Association
311	NEA-NH	Madison Employees
312	NEA-NH	Manchester Certified Instructors
313	NEA-NH	Manchester Education Association
314	NEA-NH	Marlborough Education Association
315	NEA-NH	Marlow Education Association
316	NEA-NH	Mascenic Education Association
317	NEA-NH	Mascoma Valley Education Association
318	NEA-NH	Mascoma Valley School Support Personnel
319	NEA-NH	Merrimack Education Support Staff
320	NEA-NH	Merrimack Teachers Association
321	NEA-NH	Merrimack Valley Education Association
322	NEA-NH	Merrimack Valley Support Staff

Current (non-expired) Collective Bargaining Agreements as of June, 2017

323	NEA-NH	Milford Educational Personnel Association
324	NEA-NH	Milford Educational Support Personnel
325	NEA-NH	Milford Teachers
326	NEA-NH	Milton Education Association
327	NEA-NH	Monadnock Education Support Staff
328	NEA-NH	Monroe School Support Staff
329	NEA-NH	Monroe Teachers Association
330	NEA-NH	Moultonborough School Staff Association
331	NEA-NH	New Boston Support Staff Association
332	NEA-NH	Newfields Paraprofessional Association
333	NEA-NH	Newfields Staff Association
334	NEA-NH	Newfound Area Teachers Association
335	NEA-NH	Newmarket Teachers Association
336	NEA-NH	Newport Support Staff (School)
337	NEA-NH	Northwood Education Support Personnel
338	NEA-NH	Northwood Teachers Association
339	NEA-NH	Nottingham Paraprofessional Association
340	NEA-NH	Nottingham Teachers Association
341	NEA-NH	Oyster River School Educational Support Personnel
342	NEA-NH	Oyster River Teachers' Guild
343	NEA-NH	Pelham Educational Support Staff
344	NEA-NH	Pembroke Education Association
345	NEA-NH	Pittsburg Education Association
346	NEA-NH	Pittsfield Education Association
347	NEA-NH	Plymouth Education Association
348	NEA-NH	Plymouth Education Support Personnel
349	NEA-NH	Plymouth Regional Educational Support Staff
350	NEA-NH	Portsmouth Association of Clericals
351	NEA-NH	Portsmouth School Paraprofessionals
352	NEA-NH	Portsmouth Teachers, Association of
353	NEA-NH	Profile Education Association
354	NEA-NH	Prospect Mountain Teachers Association
355	NEA-NH	Raymond Education Association
356	NEA-NH	Rumney Teachers Association
357	NEA-NH	Rye Coastal Teachers Association
358	NEA-NH	Salem Association of Food Service
359	NEA-NH	Salem Education Association
360	NEA-NH	Salem Educational Personnel Association
361	NEA-NH	Sanborn Education Support Staff
362	NEA-NH	Seacoast Education Association – SAU 21
363	NEA-NH	Seacoast Education Association – SAU 90
364	NEA-NH	Seacoast Educational Support Personnel – SAU 21
365	NEA-NH	Seacoast Educational Support Personnel – SAU 90
366	NEA-NH	Shaker Regional Education Association
367	NEA-NH	Shaker Regional Education Support Professionals
368	NEA-NH	Somersworth Association of Educators

Current (non-expired) Collective Bargaining Agreements as of June, 2017

369	NEA-NH	Somersworth Educational Support Personnel Association
370	NEA-NH	Strafford Education Association
371	NEA-NH	Stratford Teachers Association
372	NEA-NH	Stratham Paraprofessional Association
373	NEA-NH	Stratham Teachers Association
374	NEA-NH	Sugar River Education Association
375	NEA-NH	Tamworth Education Association
376	NEA-NH	Tamworth Education Support Personnel
377	NEA-NH	Thornton Education Association
378	NEA-NH	Thornton School Support Staff
379	NEA-NH	Unity Education Association
380	NEA-NH	Wakefield Education Association
381	NEA-NH	Wakefield Paraprofessional Union
382	NEA-NH	Waterville Valley Education Association
383	NEA-NH	Weare Education Association
384	NEA-NH	Wentworth Education Association
385	NEA-NH	Westmoreland Teachers
386	NEA-NH	White Mountain Education Association
387	NEA-NH	White Mountain Education Support Personnel
388	NEA-NH	Wilton-Lyndeborough Cooperative Support Staff
389	NEA-NH	Wilton-Lyndeborough Teachers
390	NEA-NH	Winchester School Support Staff
391	NEA-NH	Winchester Teachers Association
392	NEA-NH	Windham Education Association
393	NEA-NH	Winnisquam Teachers Association
394	NEA-NH	Somersworth School Clerical/Aide
395	NEPBA	Auburn Police Union
396	NEPBA	Barrington Police
397	NEPBA	Derry Police Patrolman's
398	NEPBA	Durham Police
399	NEPBA	Epping Police
400	NEPBA	Goffstown Police
401	NEPBA	Goffstown Police Dispatchers & Clerks
402	NEPBA	Hampstead Police
403	NEPBA	Lebanon Police
404	NEPBA	Merrimack County Sheriffs
405	NEPBA	Merrimack Dispatchers & Support Staff
406	NEPBA	Merrimack Police
407	NEPBA	Moultonborough Police
408	NEPBA	Nashua Police Supervisors
409	NEPBA	Portsmouth Police
410	NEPBA	Rochester Police
411	NEPBA	Rochester Police Communications
412	NEPBA	Rockingham County Sheriff's Department (Supervisors)
413	NEPBA	Seabrook Police
414	NEPBA	Somersworth Police Employees

Current (non-expired) Collective Bargaining Agreements as of June, 2017

415	NEPBA	State of New Hampshire - Fish & Game Conservation Officers
416	NEPBA	State of New Hampshire - Fish & Game Conservation Supervisors
417	NEPBA	State of New Hampshire - Liquor Investigators
418	NEPBA	State of New Hampshire - Probation Parole Officers I and II, Local 265
419	NEPBA	State of New Hampshire - Probation Parole Officers III, Local 270
420	NEPBA	Tilton Police Officers
421	NHTA	State of New Hampshire -- Command Staff
422	NHTA	State of New Hampshire - Troopers
423	OPEIU	Berlin City Office & Professional
424	SEA/SEIU	Ashland Town Employees
425	SEA/SEIU	Bedford Police
426	SEA/SEIU	Belknap County Department of Corrections
427	SEA/SEIU	Belknap County Nursing Home
428	SEA/SEIU	Belknap County Sheriff's Department
429	SEA/SEIU	Derry PATE
430	SEA/SEIU	Derry Police Supervisors
431	SEA/SEIU	Exeter Public Works
432	SEA/SEIU	Franklin City Municipal Services
433	SEA/SEIU	Hampton Public Works
434	SEA/SEIU	Laconia Administration & Technical Employees
435	SEA/SEIU	Littleton Police
436	SEA/SEIU	Meredith Town
437	SEA/SEIU	North Conway Water Precinct
438	SEA/SEIU	Plymouth State University
439	SEA/SEIU	Salem Administrative & Technical Employees
440	SEA/SEIU	Seabrook Town Employees
441	SEA/SEIU	State of New Hampshire
442	SEA/SEIU	State of New Hampshire - CCSNH (Staff)
443	SEA/SEIU	State of New Hampshire - Judicial Branch (Court Assistants)
444	SEA/SEIU	State of New Hampshire - NH Retirement System
445	SEA/SEIU	Strafford County Corrections
446	SEA/SEIU	Strafford County Riverside Rest Home
447	Teamsters	Manchester School Directors & Coordinators
448	Teamsters	Manchester School Principals
449	Teamsters	Merrimack Town Mid-Management Employees
450	Teamsters	Milford Town Employees
451	Teamsters	Nashua Police Civilians
452	Teamsters	Newmarket Police
453	Teamsters	Peterborough Town Public Works
454	Teamsters	Plaistow Police
455	Teamsters	Plaistow Town
456	Teamsters	Raymond Police Employees
457	Teamsters	Rockingham County Sheriff's Department
458	Teamsters	Rockingham County (Dispatchers)
459	Teamsters	Rockingham County (Engineers & Maintenance)
460	Teamsters	Rockingham County (Legal Assistants & Paralegals)

Current (non-expired) Collective Bargaining Agreements as of June, 2017

461	Teamsters	Rockingham Venture Park
462	Teamsters	Rye Police
463	Teamsters	Rye Town Employees
464	Teamsters	Salem Police
465	Teamsters	Sandown Police
466	Teamsters	State of New Hampshire - Corrections
467	Teamsters	State of New Hampshire - Judicial Branch (Court Security Officers)
468	Teamsters	University of NH - Police
469	UAW	Concord Administration UAW
470	UAW	Concord School Bus Drivers
471	UAW	Concord School Custodians
472	UAW	Concord School Food Service
473	UAW	Nashua City Clerical & Technical Unit
474	UAW	Nashua City Professional Unit
475	UAW	Nashua Police Professional Employees
476	UE	Grafton County Nursing Home

Expired Collective Bargaining Agreements as of June 2017

1	AFSCME	Conway Police
2	AFSCME	Coos County Nursing Home Berlin
3	AFSCME	Hillsborough County Sheriffs
4	AFSCME	Lebanon Public Works
5	AFSCME	Londonderry Police
6	AFSCME	Londonderry Public Safety
7	AFSCME	Manchester Facilities Division
8	AFSCME	Manchester Central Fleet Mgt.
9	AFSCME	Manchester Health Dept.
10	AFSCME	Manchester Master Contract
11	AFSCME	Manchester School Paraprofessionals
12	AFSCME	Nashua School Custodians
13	AFSCME	Somersworth Public Works
14	AFSCME	Weare Police Employees
15	AFSCME	Wolfeboro Town Employees
16	IAFF	Bedford Professional Firefighters
17	IAFF	Hanover Professional Firefighters
18	IAFF	Manchester Firefighters
19	IAFF	Rochester Firefighters
20	IAFF	Somersworth Firefighters
21	IBEW	Littleton Town Water & Light
22	Independent	Governor Wentworth Administrative Team
23	Independent	Keene Educational Office Personnel
24	Independent	Lebanon School Administration Group
25	Independent	Londonderry Town Executive Employees
26	Independent	Manchester Fire Supervisors
27	Independent	Manchester Police Patrolman's
28	Independent	Manchester Police Supervisors
29	Independent	Pelham, Police, Fire & Supervisors
30	Independent	Portsmouth School Administrators
31	Independent	Somersworth City Wastewater
32	Independent	Somersworth Public Administrators Association
33	NEA-NH	Dover Teachers Union
34	NEA-NH	Goshen Lempster Support Personnel
35	NEA-NH	Goshen Lempster Teachers Association
36	NEA-NH	Hinsdale Federation of Teachers
37	NEA-NH	John Stark Regional Teachers
38	NEA-NH	Keene State College Adjunct Association
39	NEA-NH	Laconia Education Association
40	NEA-NH	Laconia Educational Assistants
41	NEA-NH	Laconia School Support Staff

New Hampshire Public Employee Labor Relations Board
 2 ½ Beacon Street, Suite 200, Concord, NH 03301
 603 271-2587 pelrb@nh.gov www.nh.gov/pelrb

Expired Collective Bargaining Agreements as of June 2017

42	NEA-NH	Lebanon Education Association
43	NEA-NH	Mascenic Education Support Staff
44	NEA-NH	Monadnock Education Association
45	NEA-NH	Mont Vernon Education Association
46	NEA-NH	New Boston Education Association
47	NEA-NH	Newington – Coastal Teachers
48	NEA-NH	Newport Teachers Association
49	NEA-NH	Pelham Education Association
50	NEA-NH	Plainfield Education Association
51	NEA-NH	Plainfield Support Staff
52	NEA-NH	Rollinsford Education Association
53	NEA-NH	Rye Educational Support Personnel Association
54	NEA-NH	Sanborn Education Association
55	NEA-NH	Sunapee Teachers
56	NEPBA	Farmington Police
57	NEPBA	Hanover Police
58	NEPBA	Hillsborough Police
59	NEPBA	Lebanon Police
60	NEPBA	Nashua Police Communications
61	NEPBA	Strafford County Sheriffs
62	NEPBA	Wolfeboro Police Employees
63	SEIU	Merrimack County Corrections
64	SEIU	State – SEA, CCSNH (Adjunct Faculty)
65	SEIU	State – SEA, CCSNH (Full Time Faculty)
66	Teamsters	Belknap County Support Staff
67	Teamsters	Cheshire County Sheriff's
68	Teamsters	Lebanon Professional Administration & Salaried Employees
69	Teamsters	Manchester Airport Authority
70	Teamsters	Manchester City Library
71	Teamsters	Manchester Police Support Staff
72	Teamsters	Manchester Welfare Dept.
73	Teamsters	North Hampton Town Employees
74	Teamsters	Pittsfield Police Employees
75	Teamsters	Rockingham County (Supervisory)
76	Teamsters	Yankee Greyhound Race Track (Maintenance)
77	Teamsters	Yankee Greyhound Race Track (Officials)
78	Teamsters	Yankee Greyhound Race Track (Security)
79	UE	Grafton County Nursing Home
80	USWA	Manchester Water Works

New Hampshire Public Employee Labor Relations Board
 2 ½ Beacon Street, Suite 200, Concord, NH 03301
 603 271-2587 pelrb@nh.gov www.nh.gov/pelrb

000031