



Victoria F. Sheehan  
Commissioner

THE STATE OF NEW HAMPSHIRE  
DEPARTMENT OF TRANSPORTATION

JUN24'22 AM 8:50 RCVD



William Cass, P.E.  
Assistant Commissioner

15

His Excellency, Governor Christopher T. Sununu  
and the Honorable Council  
State House  
Concord, New Hampshire 03301

Bureau of Construction  
June 23, 2022

**REQUESTED ACTION**

Authorize the Department of Transportation to increase the contract value amount for Contract # District 1 N 16161K with Pike Industries, Inc., (Vendor # 177300), of Belmont, NH, by \$675,000.00, (from \$4,343,543.25 to \$5,018,543.25) for additional pavement preservation work on NH 110A in Milan-Dummer and on NH 16 in Errol, effective upon Governor and Council approval. 100% Federal Funds.

Funding is available as follows:	<u>FY 2023</u>
04-96-96-963015-3039	
Highway Betterment Aid	
400-500870 Highway Contract Payments	\$675,000.00

**EXPLANATION**

The District 1 N 16161K contract was approved by Governor and Council on April 6, 2022 (Item # 29), on a basis of a low bid for an original contract encumbrance of \$4,343,543.25. The contract is proposed to be increased by \$675,000.00 in accordance with the standard specifications to address the following items:

1. NH 110A – Unanticipated additional pavement repairs are necessary due to existing road surface deterioration that is much more severe than originally anticipated. Estimated Cost is \$385,000.00.
2. NH 16 – Additional pavement quantity needed to extend the full-width overlay 0.2 miles to the intersection with NH 26. Estimated Cost is \$50,000.00.
3. In accordance with the contract terms, additional price adjustment for liquid asphalt cement and fuel will be required due to the price escalation of oil. Estimated Cost is \$240,000.00.

This Contract includes a contingency amount of \$150,000.00. We propose to maintain this contingency amount in recognition that the work has not started. Final completion date for this contract is September 23, 2022.

Your approval of this resolution is respectfully requested.

Sincerely,

Victoria F. Sheehan  
Commissioner

Attachments

29 Dam



Victoria F. Sheehan  
Commissioner

**THE STATE OF NEW HAMPSHIRE**  
DEPARTMENT OF TRANSPORTATION



William Cass, P.E.  
Assistant Commissioner

His Excellency, Governor Christopher T. Sununu  
and the Honorable Council  
State House  
Concord, New Hampshire 03301

Bureau of Construction  
March 10, 2022

**REQUESTED ACTION**

1. Authorize the Department of Transportation to enter into a contract with Pike Industries, Inc. of Belmont, NH (Vendor 177300) on the basis of a low bid of \$4,343,543.25 for resurfacing various Tier 2, 3 and 4 roads throughout 12 towns, including: Stratford, Lancaster, Bethlehem, Whitefield, Jefferson, Errol, Randolph, Shelburne, Milan, Dummer, Northumberland and Stark, in District 1 (Project: District 1 16161K), from the date of Governor and Council approval through September 23, 2022, unless extended by the Department in accordance with the Standard Specifications. 15.63% General Funds and 84.37% Other Funds (Betterment and SB367).

Funding is available in State Fiscal Year 2022 and 2023, with the ability to adjust encumbrances through the Budget Office between State Fiscal Years if needed and justified:

Funding is available as follows:	<u>FY 2022</u>	<u>FY 2023</u>
04-96-96-963015-3039 Highway Betterment Aid		
400-500870 Highway Contract Payments	\$1,740,150.25	\$886,424.26

Funding is available as follows:	<u>FY 2022</u>	<u>FY 2023</u>
04-96-96-963015-8910 SB 367 Capital Investment		
400-500870 Highway Contract Payments	\$687,763.46	\$350,371.50

Funding is available as follows:	<u>FY 2022</u>	<u>FY 2023</u>
04-96-96-963010-7767 Transportation Projects CH 91 L 21		
400-500870 Highway Contract Payments	\$449,683.78	\$229,150.00

2. Further authorize that a contingency in the amount of \$150,000.00 be approved for payment of latent conditions, which may appear during the construction of the project. The contingency requested is approximately 3% of the contract amount.

Funding is available as follows:	<u>FY 2023</u>
04-96-96-963015-3039 Highway Betterment Aid	
400-500870 Highway Contract Payments	\$150,000.00

### EXPLANATION

This project is included in the State's Ten-Year Transportation Improvement Plan, under the CY 2022 State funded Tier 2, 3 and 4 resurfacing programs (Pave-T2-Resurf, Pave-T3/4-Resurf, Pave T3/4-Rehab). This project resurfaces thirteen (13) sections of various Tier 2, 3 and 4 roads throughout twelve (12) towns in District 1. The sections total approximately 36.1 miles in length. Incidental work includes curb ramp reconstruction, pavement striping, and drainage work.

- 20110 – Stratford, US 3, ¾" Paver Shim Full-Width Overlay, 1.6 Miles
- 21102 – Lancaster, US 2/US 3, ¾" Paver Shim Full-Width Overlay, 2" TW+1' HS Inlay, 2.1 Miles
- 21111 – Bethlehem, NH 18, ¾" Paver Shim Full-Width, 2.3 Miles
- 21116 – Whitefield, NH 116, ¾" Paver Shim Full-Width Overlay, 2" Full-Width HS Inlay, 2.8 Miles
- 21120 – Jefferson, North Rd, ¾" Paver Shim Full-Width Overlay, 2.1 Miles
- 22101 – Errol, NH 16, ¾" Paver Shim Full-Width Overlay, 5.7 Miles
- 22102 – Errol, NH 16, ¾" Paver Shim Full-Width Overlay, 1.7 Miles
- 22105 – Randolph, US 2, ¾" Paver Shim Full-Width Overlay, 1.0 Miles
- 22106A – Shelburne, US 2, ¾" Paver Shim Full-Width Overlay, 4.0 Miles
- 22113 – Milan-Dummer, NH 110A, ¾" Paver Shim Full-Width Overlay, 3.9 Miles
- 22113A – Milan-Dummer, NH 110A, 4" PMRAP and ¾" Leveling Course, 2.4 Miles
- 23102 – Northumberland-Stark, NH 110, 1¼" Full-Width HS Overlay and 1¼" Full-Width Overlay, 3.2 Miles
- 23103 – Whitefield-Jefferson, NH 116, ¾" Paver Shim Full-Width Overlay, 3.4 Miles

This project will extend the quality life of the pavement, curb ramps, and drainage; and delay costlier improvements. The sections will be resurfaced via paver shim overlay, high strength inlay and Pug Mill Recycled Asphalt Pavement. Forty (40) sidewalk curb ramps will be upgraded to comply with ADA guidelines. The Contractor will be responsible for striping. All impacted towns and utilities will be notified.

The proposed contingency amount is approximately 3% of the contract amount. This project was quantified based on field observations, aerial photos, and as-built plans. Field adjustments may be required due to varying field conditions. In addition, the sections will continue to deteriorate through the 2021-2022 winter.

The Contractor has been prequalified by this Department. The Contract has been approved by the Attorney General as to form and execution, and the Department has certified that the necessary funds are available, and the bid reasonably conforms to the engineer's estimate in accordance with State procedures. Copies of the fully executed contract are on file at the Secretary of State's Office and the Department of Administrative Service's Office, and subsequent to Governor and Council approval will be on file at the Department of Transportation.

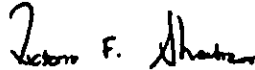
This project funding is: 0% Federal (15.63% General Funds and 84.37% Other Funds (60.47% Betterment and 23.90% SB367)).

Page 3

A copy of the Tabulation of Bids received for this project is attached along with the Contract Supplemental Sheet and a map indicating the location of the project.

Your approval of this resolution is respectfully requested.

Sincerely,



Victoria F. Sheehan  
Commissioner

VFS/pcj

Department Estimate: \$4,670,508.12  
Contract Amount: \$4,343,543.25  
Under Estimate: \$ 326,964.87

Attachments



# ABC Bid Data

DISTRICT 1 N  
16161K  
NON-FEDERAL

PROJECT: DISTRICT 1 N  
STATE PROJECT NUMBER: 16161K  
FED. PROJECT NUMBER: NON-FEDERAL  
DATE BIDS OPEN: February 22, 2022,  
SCOPE OF WORK: Resurfacing of roadways in District 1  
COMPLETION DATE: September 23, 2022  
LOCATION: Grafton, Coos, District 1

Awarded To: PIKE INDUSTRIES, INC.  
3 EASTGATE PARK ROAD  
BELMONT, NH 03220

Amount: \$4,343,543.25  
Award Date:

Certified by: PETER E. STAMNAS  
Director of Project Development

## Summary of Bidders

Contractor	Bid Amount	Rank
PIKE INDUSTRIES, INC. 3 EASTGATE PARK ROAD, BELMONT NH 03220	\$4,343,543.25	A
J HUTCHINS INC 88 ROGERS LANE, RICHMOND VT 05477	\$4,889,545.23	B



# ABC Bid Data

DISTRICT 1 N  
16161K  
NON-FEDERAL

Item No.	Description	Unit	Quantity	PRICE		PKZ INDUSTRIES, INC. 1 GATEWAY PARK ROAD BELLMONT, NH 03329		J HUTCHINS INC 86 ROGERS LANE RICHMOND, VT 05477	
				Unit Price	Total	Unit Price	Total	Unit Price	Total

Items

206.1	COMMON STRUCTURE EXCAVATION	CY	21.70	\$500.00	\$10,850.00	\$1,100.00	\$23,870.00	\$618.00	\$13,410.60
304.32	CRUSHED GRAVEL FOR SHOULDER LEVELING	TON	8,746.78	\$25.00	\$143,717.50	\$29.00	\$108,712.30	\$25.50	\$146,591.85
403.11063	HSP-3/8" SURFACE MIX, MACHINE METHOD	TON	4,388.49	\$84.50	\$371,684.80	\$80.00	\$351,872.00	\$82.28	\$361,900.35
403.11943	HSP-1/2" SURFACE MIX, MACHINE METHOD, HIGH STRENGTH	TON	3,022.50	\$81.00	\$244,822.50	\$85.00	\$256,912.50	\$83.69	\$258,908.03
403.11863	HSP-3/8" SURFACE MIX, MACHINE METHOD, HIGH STRENGTH	TON	248.70	\$83.50	\$20,849.95	\$100.00	\$24,970.00	\$100.41	\$25,072.38
403.12	HSP-HAND METHOD	TON	97.10	\$184.00	\$17,868.40	\$225.00	\$21,847.50	\$275.00	\$26,702.50
403.18	PAVEMENT JOINT ADHESIVE	LF	62,197.10	\$0.25	\$13,049.28	\$0.25	\$13,049.28	\$0.24	\$12,527.30
403.4	MATERIAL TRANSFER VEHICLE (MTV)	TON	7,176.90	\$1.85	\$13,277.27	\$2.50	\$17,942.25	\$2.18	\$15,502.10
410.22	ASPHALT EMULSION FOR TACK COAT	GAL	22,668.00	\$3.75	\$84,956.25	\$3.75	\$84,956.25	\$2.75	\$62,301.25
411.1	HOT BITUMINOUS CONCRETE LEVELING COURSE	TON	1,621.90	\$94.87	\$153,545.27	\$82.00	\$132,995.80	\$94.31	\$152,961.39
411.3	PLANT MIX SURFACE TREATMENT (ASPHALT CEMENT), PAVER SHOE	TON	23,676.30	\$78.15	\$1,842,457.85	\$82.00	\$1,933,258.60	\$89.61	\$2,112,672.24
417.	COLD PLANING BITUMINOUS SURFACES	SY	42,628.00	\$3.00	\$127,584.00	\$2.00	\$85,056.00	\$4.50	\$191,378.00
417.1181	COLD PLANING BITUMINOUS SURFACES, 18" WIDE X 1" DEEP	LF	9,681.80	\$1.85	\$17,911.33	\$1.50	\$14,522.70	\$0.20	\$1,936.36
418.32	EMULSIFIED ASPHALT FOR COLD PAVEMENT	GAL	69,968.90	\$2.30	\$137,928.47	\$2.75	\$190,914.48	\$3.15	\$188,902.04
418.41	PLANT MIXED RECYCLED ASPHALT PAVEMENT	TON	8,348.20	\$27.50	\$229,493.00	\$33.00	\$275,391.60	\$33.08	\$276,059.22
604.0007	POLYETHYLENE LINER	EA	68.00	\$134.50	\$7,397.50	\$125.00	\$8,675.00	\$145.00	\$7,975.00
604.4	RECONSTRUCTING/ADJUSTING CATCH BASIN & DROP INLET	LF	41.00	\$508.50	\$20,768.50	\$450.00	\$18,450.00	\$700.00	\$28,700.00
604.62	RECONSTRUCTING/ADJUSTING DRAINAGE MANHOLES	LF	2.00	\$530.00	\$1,060.00	\$450.00	\$900.00	\$785.00	\$1,570.00
604.72	GRATES & FRAMES, TYPE B	EA	14.00	\$670.00	\$9,380.00	\$800.00	\$11,200.00	\$300.00	\$4,200.00
608.2401	4" CONCRETE SIDEWALK	SY	199.70	\$80.00	\$15,976.00	\$85.00	\$16,974.50	\$170.00	\$33,949.00
608.64	DETECTABLE WARNING DEVICES, CAST IRON	SY	48.40	\$430.00	\$19,522.00	\$475.00	\$21,565.00	\$350.00	\$15,890.00
609.01	STRAIGHT GRANITE CURB	LF	14.00	\$52.00	\$728.00	\$125.00	\$1,750.00	\$172.00	\$2,408.00
609.6	RESET GRANITE CURB	LF	77.70	\$25.00	\$1,942.50	\$85.00	\$6,604.50	\$28.00	\$2,175.60



# ABC Bid Data

DISTRICT 1 N  
16161K  
NON-FEDERAL

Item No.	Description	Unit	Quantity	PAVE		PINE INDUSTRIES, INC. 1 EASTBATE PARK ROAD BELMONT, NH 03220		J HUTCHINS INC 88 ROGERS LANE RICHMOND, VT 05477	
				Unit Price	Total	Unit Price	Total	Unit Price	Total
618.61	UNIFORMED OFFICERS WITH VEHICLE	\$	10,000.00	\$1.00	\$10,000.00	\$1.00	\$10,000.00	\$1.00	\$10,000.00
618.7	FLAGGERS	HR	3,083.00	\$39.00	\$120,237.00	\$39.00	\$120,237.00	\$46.00	\$141,818.00
619.1	MAINTENANCE OF TRAFFIC	U	1.00	\$200,000.00	\$200,000.00	\$75,000.00	\$75,000.00	\$147,000.00	\$147,000.00
619.25	PORTABLE CHANGEABLE MESSAGE SIGN	U	4.00	\$4,122.65	\$16,490.60	\$1,600.00	\$6,400.00	\$3,000.00	\$12,000.00
628.1	SAWED CONCRETE PAVEMENT	LF	278.30	\$16.00	\$4,452.80	\$20.00	\$5,566.00	\$5.03	\$1,399.85
628.2	SAWED BITUMINOUS PAVEMENT	LF	606.70	\$3.50	\$1,768.95	\$15.00	\$7,585.50	\$3.50	\$1,768.95
632.0104	RETROREFLECTIVE PAINT PAVE. MARKING, 4" LINE	LF	1,381,273.00	\$0.20	\$270,254.60	\$0.13	\$175,665.49	\$0.14	\$189,178.22
632.1104	PREFORMED RETROREFLECTIVE TAPE, TYPE I (REMOVABLE) 4" LINE	LF	68.00	\$2.15	\$118.25	\$1.00	\$65.00	\$4.00	\$220.00
632.1118	PREFORMED RETROREFLECTIVE TAPE, TYPE I (REMOVABLE) 18" LINE	LF	218.00	\$5.75	\$1,242.00	\$4.00	\$864.00	\$5.50	\$1,188.00
632.3104	RETROREFLECT. THERMOPLAS. PAVE. MARKING, 4" LINE	LF	68.00	\$3.10	\$170.80	\$2.05	\$112.78	\$2.00	\$110.00
632.3108	RETROREFLECT. THERMOPLAS. PAVE. MARKING, 8" LINE	LF	197.00	\$5.50	\$1,083.50	\$4.25	\$837.25	\$4.00	\$788.00
632.3112	RETROREFLECT. THERMOPLAS. PAVE. MARKING, 12" LINE	LF	1,639.00	\$5.70	\$9,342.30	\$5.00	\$8,195.00	\$5.00	\$8,195.00
632.3118	RETROREFLECT. THERMOPLAS. PAVE. MARKING, 18" LINE	LF	118.00	\$8.65	\$1,020.70	\$6.00	\$708.00	\$6.00	\$708.00
632.3124	RETROREFLECT. THERMOPLAS. PAVE. MARKING, 24" LINE	LF	88.00	\$12.50	\$1,225.00	\$10.00	\$880.00	\$10.00	\$880.00
632.32	RETROREFLECT. THERMOPLAS. PAVEMENT MARKING, SYMBOL OR WORD	SF	288.00	\$10.50	\$2,914.00	\$11.00	\$2,948.00	\$10.00	\$2,880.00
632.911	OBLITERATE PAVE. MARKING LINE, 12" WIDE & UNDER	LF	210.00	\$2.10	\$441.00	\$2.00	\$420.00	\$2.00	\$420.00
632.912	OBLITERATE PAVE. MARKING LINE, OVER 12" WIDE	LF	98.00	\$1.80	\$178.40	\$3.00	\$294.00	\$3.00	\$294.00
632.92	OBLITERATE PAVEMENT MARKING, SYMBOL OR WORD	SF	233.00	\$4.75	\$1,106.75	\$4.00	\$932.00	\$4.00	\$932.00
648.41	TURF ESTABLISHMENT WITH MULCH, TACKIFIERS AND HUMUS	SY	34.10	\$4.00	\$136.40	\$50.00	\$1,705.00	\$130.00	\$4,433.00
692.	MOBILIZATION	U	1.00	\$200,000.00	\$200,000.00	\$104,000.00	\$104,000.00	\$250,000.00	\$250,000.00
699.	MISCELLANEOUS TEMPORARY EROSION AND SEDIMENT CONTROL	\$	6,000.00	\$1.00	\$5,000.00	\$1.00	\$5,000.00	\$1.00	\$5,000.00
1008.11	ALTERATIONS AND ADDITIONS AS NEEDED - UNANTICIPATED WORK	\$	15,000.00	\$1.00	\$15,000.00	\$1.00	\$15,000.00	\$1.00	\$15,000.00
1008.251	ALTERATIONS AND ADDITIONS AS NEEDED - TEMPORARY PEDESTRIAN ACCOMMODATIONS	\$	10,000.00	\$1.00	\$10,000.00	\$1.00	\$10,000.00	\$1.00	\$10,000.00
1010.16	FUEL ADJUSTMENT	\$	40,000.00	\$1.00	\$40,000.00	\$1.00	\$40,000.00	\$1.00	\$40,000.00
1010.2	ASPHALT CEMENT ADJUSTMENT	\$	100,000.00	\$1.00	\$100,000.00	\$1.00	\$100,000.00	\$1.00	\$100,000.00



# ABC Bid Data

DISTRICT 1 N  
16161K  
NON-FEDERAL

Item No.	Description	Unit	Quantity	P&S		PRICE INDUSTRIES, INC. 3 EASTGATE PARK ROAD BELMONT, NH 03229		J MITCHELL INC 26 ROGERS LANE RICHMOND, VT 05477	
				Unit Price	Total	Unit Price	Total	Unit Price	Total
1010.21	ASPHALT CEMENT ADJUSTMENT FOR EMULSION	\$	1,660.00	\$1.00	\$1,650.00	\$1.00	\$1,650.00	\$1.00	\$1,650.00
Totals:					\$4,670,608.12		\$4,343,643.28		\$4,889,646.23
A/R Totals:									
Totals:					\$4,670,608.12		\$4,343,643.28		\$4,889,646.23





## PS&E Comparison

DISTRICT 1 N  
18181K  
NON-FEDERAL

Item No.	Description	Unit	Quantity	A-Bidder		PS&E		A-PS&E Difference
				Unit Price	Total	Unit Price	Total	
<b>Items</b>								
206.1	COMMON STRUCTURE EXCAVATION	CY	21.70	\$1,100.00	\$23,870.00	\$500.00	\$10,850.00	\$13,020.00
304.32	CRUSHED GRAVEL FOR SHOULDER LEVELING	TON	5,748.70	\$29.00	\$166,712.30	\$25.00	\$143,717.50	\$22,994.80
403.11053	HBP-3/8" SURFACE MIX, MACHINE METHOD	TON	4,398.40	\$80.00	\$351,872.00	\$84.50	\$371,664.80	(\$19,792.80)
403.11943	HBP-1/2" SURFACE MIX, MACHINE METHOD, HIGH STRENGTH	TON	3,022.50	\$85.00	\$258,912.50	\$81.00	\$244,822.50	\$12,090.00
403.11953	HBP-3/8" SURFACE MIX, MACHINE METHOD, HIGH STRENGTH	TON	249.70	\$100.00	\$24,970.00	\$83.50	\$20,849.95	\$4,120.05
403.12	HBP-HAND METHOD	TON	97.10	\$225.00	\$21,847.50	\$184.00	\$17,868.40	\$3,981.10
403.16	PAVEMENT JOINT ADHESIVE	LF	52,197.10	\$0.25	\$13,049.28	\$0.25	\$13,049.28	\$0.00
403.4	MATERIAL TRANSFER VEHICLE (MTV)	TON	7,178.90	\$2.50	\$17,942.25	\$1.85	\$13,277.27	\$4,664.98
410.22	ASPHALT EMULSION FOR TACK COAT	GAL	22,655.00	\$3.75	\$84,956.25	\$3.75	\$84,956.25	\$0.00
411.1	HOT BITUMINOUS CONCRETE LEVELING COURSE	TON	1,621.90	\$82.00	\$132,995.80	\$94.67	\$153,545.27	(\$20,549.47)
411.3	PLANT MIX SURFACE TREATMENT (ASPHALT CEMENT), PAVER SHIM	TON	23,576.30	\$82.00	\$1,933,256.60	\$78.15	\$1,842,487.85	\$90,768.75
417.	COLD PLANING BITUMINOUS SURFACES	SY	42,528.00	\$2.00	\$85,056.00	\$3.00	\$127,584.00	(\$42,528.00)
417.1181	COLD PLANING BITUMINOUS SURFACES, 18" WIDE X 1" DEEP	LF	9,681.80	\$1.50	\$14,522.70	\$1.85	\$17,911.33	(\$3,388.63)
418.32	EMULSIFIED ASPHALT FOR COLD PAVEMENT	GAL	59,968.90	\$2.75	\$164,914.48	\$2.30	\$137,928.47	\$26,986.01



## PS&E Comparison

DISTRICT 1 N  
16161K  
NON-FEDERAL

Item No.	Description	Unit	Quantity	A-Bidder		PS&E		A-PS&E Difference
				Unit Price	Total	Unit Price	Total	
418.41	PLANT MIXED RECYCLED ASPHALT PAVEMENT	TON	8,345.20	\$33.00	\$275,391.60	\$27.50	\$229,493.00	\$45,898.60
604.0007	POLYETHYLENE LINER	EA	55.00	\$125.00	\$6,875.00	\$134.50	\$7,397.50	(\$522.50)
604.4	RECONSTRUCTING/ADJUSTING CATCH BASIN & DROP INLET	LF	41.00	\$450.00	\$18,450.00	\$506.50	\$20,768.50	(\$2,316.50)
604.52	RECONSTRUCTING/ADJUSTING DRAINAGE MANHOLES	LF	2.00	\$450.00	\$900.00	\$530.00	\$1,060.00	(\$160.00)
604.72	GRATES & FRAMES, TYPE B	EA	14.00	\$600.00	\$8,400.00	\$670.00	\$9,380.00	(\$980.00)
608.2401	4" CONCRETE SIDEWALK	SY	199.70	\$85.00	\$16,974.50	\$80.00	\$15,976.00	\$998.50
608.54	DETECTABLE WARNING DEVICES, CAST IRON	SY	45.40	\$475.00	\$21,565.00	\$430.00	\$19,522.00	\$2,043.00
609.01	STRAIGHT GRANITE CURB	LF	14.00	\$125.00	\$1,750.00	\$52.00	\$728.00	\$1,022.00
609.5	RESET GRANITE CURB	LF	77.70	\$85.00	\$6,604.50	\$25.00	\$1,942.50	\$4,662.00
618.61	UNIFORMED OFFICERS WITH VEHICLE	\$	10,000.00	\$1.00	\$10,000.00	\$1.00	\$10,000.00	\$0.00
618.7	FLAGGERS	HR	3,083.00	\$39.00	\$120,237.00	\$39.00	\$120,237.00	\$0.00
619.1	MAINTENANCE OF TRAFFIC	U	1.00	\$75,000.00	\$75,000.00	\$280,000.00	\$260,000.00	(\$185,000.00)
619.25	PORTABLE CHANGEABLE MESSAGE SIGN	U	4.00	\$1,500.00	\$6,000.00	\$4,122.65	\$16,490.60	(\$10,490.60)
628.1	SAWED CONCRETE PAVEMENT	LF	278.30	\$20.00	\$5,566.00	\$16.00	\$4,452.80	\$1,113.20
628.2	SAWED BITUMINOUS PAVEMENT	LF	505.70	\$15.00	\$7,585.50	\$3.50	\$1,769.95	\$5,815.55
632.0104	RETROREFLECTIVE PAINT PAVE. MARKING, 4" LINE	LF	1,351,273.00	\$0.13	\$175,665.49	\$0.20	\$270,254.60	(\$94,589.11)



## PS&E Comparison

DISTRICT 1 N  
18181K  
NON-FEDERAL

Item No.	Description	Unit	Quantity	A-Bidder		PS&E		A-PS&E Difference
				Unit Price	Total	Unit Price	Total	
632.1104	PREFORMED RETROREFLECTIVE TAPE, TYPE 1 (REMOVABLE) 4" LINE	LF	55.00	\$1.00	\$55.00	\$2.15	\$118.25	(\$63.25)
632.1118	PREFORMED RETROREFLECTIVE TAPE, TYPE 1 (REMOVABLE) 18" LINE	LF	216.00	\$4.00	\$864.00	\$5.75	\$1,242.00	(\$378.00)
632.3104	RETROREFLECT. THERMOPLAS. PAVE. MARKING, 4" LINE	LF	55.00	\$2.05	\$112.75	\$3.10	\$170.50	(\$57.75)
632.3108	RETROREFLECT. THERMOPLAS. PAVE. MARKING, 8" LINE	LF	197.00	\$4.25	\$837.25	\$5.50	\$1,083.50	(\$246.25)
632.3112	RETROREFLECT. THERMOPLAS. PAVE. MARKING, 12" LINE	LF	1,639.00	\$5.00	\$8,195.00	\$5.70	\$9,342.30	(\$1,147.30)
632.3118	RETROREFLECT. THERMOPLAS. PAVE. MARKING, 18" LINE	LF	118.00	\$6.00	\$708.00	\$8.65	\$1,020.70	(\$312.70)
632.3124	RETROREFLECT. THERMOPLAS. PAVE. MARKING, 24" LINE	LF	98.00	\$10.00	\$980.00	\$12.50	\$1,225.00	(\$245.00)
632.32	RETROREFLECT. THERMOPLAS. PAVEMENT MARKING, SYMBOL OR WORD	SF	268.00	\$11.00	\$2,948.00	\$10.50	\$2,814.00	\$134.00
632.911	OBLITERATE PAVE. MARKING LINE, 12" WIDE & UNDER	LF	210.00	\$2.00	\$420.00	\$2.10	\$441.00	(\$21.00)
632.912	OBLITERATE PAVE. MARKING LINE, OVER 12" WIDE	LF	98.00	\$3.00	\$294.00	\$1.80	\$176.40	\$117.60
632.92	OBLITERATE PAVEMENT MARKING, SYMBOL OR WORD	SF	233.00	\$4.00	\$932.00	\$4.75	\$1,106.75	(\$174.75)
646.41	TURF ESTABLISHMENT WITH MULCH, TACKIFIERS AND HUMUS	SY	34.10	\$50.00	\$1,705.00	\$4.00	\$136.40	\$1,568.60
692.	MOBILIZATION	U	1.00	\$104,000.00	\$104,000.00	\$290,000.00	\$290,000.00	(\$186,000.00)
699.	MISCELLANEOUS TEMPORARY EROSION AND SEDIMENT CONTROL	\$	5,000.00	\$1.00	\$5,000.00	\$1.00	\$5,000.00	\$0.00



## PS&E Comparison

DISTRICT 1 N  
18181K  
NON-FEDERAL

Item No.	Description	Unit	Quantity	A-Bidder		PS&E		A-PS&E Difference
				Unit Price	Total	Unit Price	Total	
1008.11	ALTERATIONS AND ADDITIONS AS NEEDED - UNANTICIPATED WORK	\$	15,000.00	\$1.00	\$15,000.00	\$1.00	\$15,000.00	\$0.00
1008.251	ALTERATIONS AND ADDITIONS AS NEEDED - TEMPORARY PEDESTRIAN ACCOMMODATIONS	\$	10,000.00	\$1.00	\$10,000.00	\$1.00	\$10,000.00	\$0.00
1010.15	FUEL ADJUSTMENT	\$	40,000.00	\$1.00	\$40,000.00	\$1.00	\$40,000.00	\$0.00
1010.2	ASPHALT CEMENT ADJUSTMENT	\$	100,000.00	\$1.00	\$100,000.00	\$1.00	\$100,000.00	\$0.00
1010.21	ASPHALT CEMENT ADJUSTMENT FOR EMULSION	\$	1,650.00	\$1.00	\$1,650.00	\$1.00	\$1,650.00	\$0.00
<b>Total:</b>					<b>\$4,343,543.25</b>		<b>\$4,670,508.12</b>	<b>(\$326,964.87)</b>

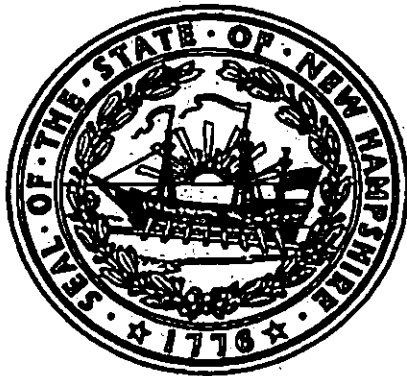
**State of New Hampshire**  
**Department of State**

**CERTIFICATE**

I, William M. Gardner, Secretary of State of the State of New Hampshire, do hereby certify that PIKE INDUSTRIES, INC. is a Delaware Profit Corporation registered to transact business in New Hampshire on July 08, 1988. I further certify that all fees and documents required by the Secretary of State's office have been received and is in good standing as far as this office is concerned.

Business ID: 132573

Certificate Number: 0005333602



IN TESTIMONY WHEREOF,

I hereto set my hand and cause to be affixed  
the Seal of the State of New Hampshire,  
this 1st day of April A.D. 2021.

A handwritten signature in black ink, appearing to read "William M. Gardner".

William M. Gardner  
Secretary of State

**Certificate of Authority #1**

*(Corporation, Non-Profit Corporation)*

**Corporate Resolution**

I, **DEBORAH A. KEITH**, hereby certify that I am duly elected Clerk/Secretary/Officer of **PIKE INDUSTRIES, INC.** I hereby certify the following is a true copy of a vote taken at  
*(Name of Corporation)*

a meeting of the Board of Directors/shareholders, duly called and held on **January 1, 2022**,  
at which a quorum of the Directors/shareholders were present and voting.

VOTED: That **JENNIFER L. DESJARDINS, CONTRACT ADMINISTRATOR**  
**ALEX PHELPS, VICE PRESIDENT-CONSTRUCTION**  
**GREG GORMAN, REGIONAL MANAGER**  
**KEN WOOD, AREA MANAGER**  
**JODY PELLETIER, CONSTRUCTION MANAGER**  
**BETHANY HUCKINS, ESTIMATOR-NH**

(may list more than one person)

are duly authorized to enter into contracts or agreements on behalf of

**PIKE INDUSTRIES, INC.** with the State of New Hampshire and any of  
*(Name of Corporation)*

its agencies or departments and further is authorized to execute any documents  
which may in his/her judgment be desirable or necessary to effect the purpose of  
this vote.

I hereby certify that said vote has not been amended or repealed and remains in full force  
and effect as of the date of the contract to which this certificate is attached. This authority  
remains valid for thirty (30) days from the date of this Corporate Resolution. I further certify that it is  
understood that the State of New Hampshire will rely on this certificate as evidence that the person(s)  
listed above currently occupy the position(s) indicated and that they have full  
authority to bind the corporation. To the extent that there are any limits on the authority of any  
listed individual to bind the corporation in contracts with the State of New Hampshire, all such  
limitations are expressly stated herein.

DATED: **MARCH 7, 2022**

ATTEST:

  
**DEBORAH A. KEITH, ASST. SECRETARY**  
*(Name & Title)*

March 3, 2022

## SUPPLEMENTAL PROJCT INFORMATION SHEET

**DESCRIPTION:** This project resurfaces 13 sections of various Tier 2, 3 and 4 roads throughout 12 towns in District 1. The sections total approximately 36.1 miles in length. Incidental work includes curb ramp reconstruction, pavement striping, and drainage work.

- 20110 Stratford, US 3, ¾" Paver Shim Full-Width Overlay, 1.6 Miles
- 21102 Lancaster, US 2/US 3, ¾" Paver Shim Full-Width Overlay, 2" TW+1' HS Inlay, 2.1 Miles
- 21111 Bethlehem, NH 18, ¾" Paver Shim Full-Width, 2.3 Miles
- 21116 Whitefield, NH 116, ¾" Paver Shim Full-Width Overlay, 2" Full-Width HS Inlay, 2.8 Miles
- 21120 Jefferson, North Rd, ¾" Paver Shim Full-Width Overlay, 2.1 Miles
- 22101 Errol, NH 16, ¾" Paver Shim Full-Width Overlay, 5.7 Miles
- 22102 Errol, NH 16, ¾" Paver Shim Full-Width Overlay, 1.7 Miles
- 22105 Randolph, US 2, ¾" Paver Shim Full-Width Overlay, 1.0 Miles
- 22106A Shelburne, US 2, ¾" Paver Shim Full-Width Overlay, 4.0 Miles
- 22113 Milan-Dummer, NH 110A, ¾" Paver Shim Full-Width Overlay, 3.9 Miles
- 22113A Milan-Dummer, NH 110A, 4" PMRAP and ¾" Leveling Course, 2.4 Miles
- 23102 Northumberland-Stark, NH 110, 1¼" Full-Width HS Overlay and 1¼" Full-Width Overlay, 3.2 Miles
- 23103 Whitefield-Jefferson, NH 116, ¾" Paver Shim Full-Width Overlay, 3.4 Miles

**FEDERAL FUNDING:** 0% (60.47% BETTERMENT, 23.90% SB-367, 15.63% HB2)

**CONTINGENCY:** The proposed contingency amount is \$150,000, approximately 3% of the contract amount. This project was quantified based on field observations, aerial photos, and as-built plans. Field adjustments may be required due to varying field conditions. In addition, the sections will continue to deteriorate through the 2021-2022 winter.

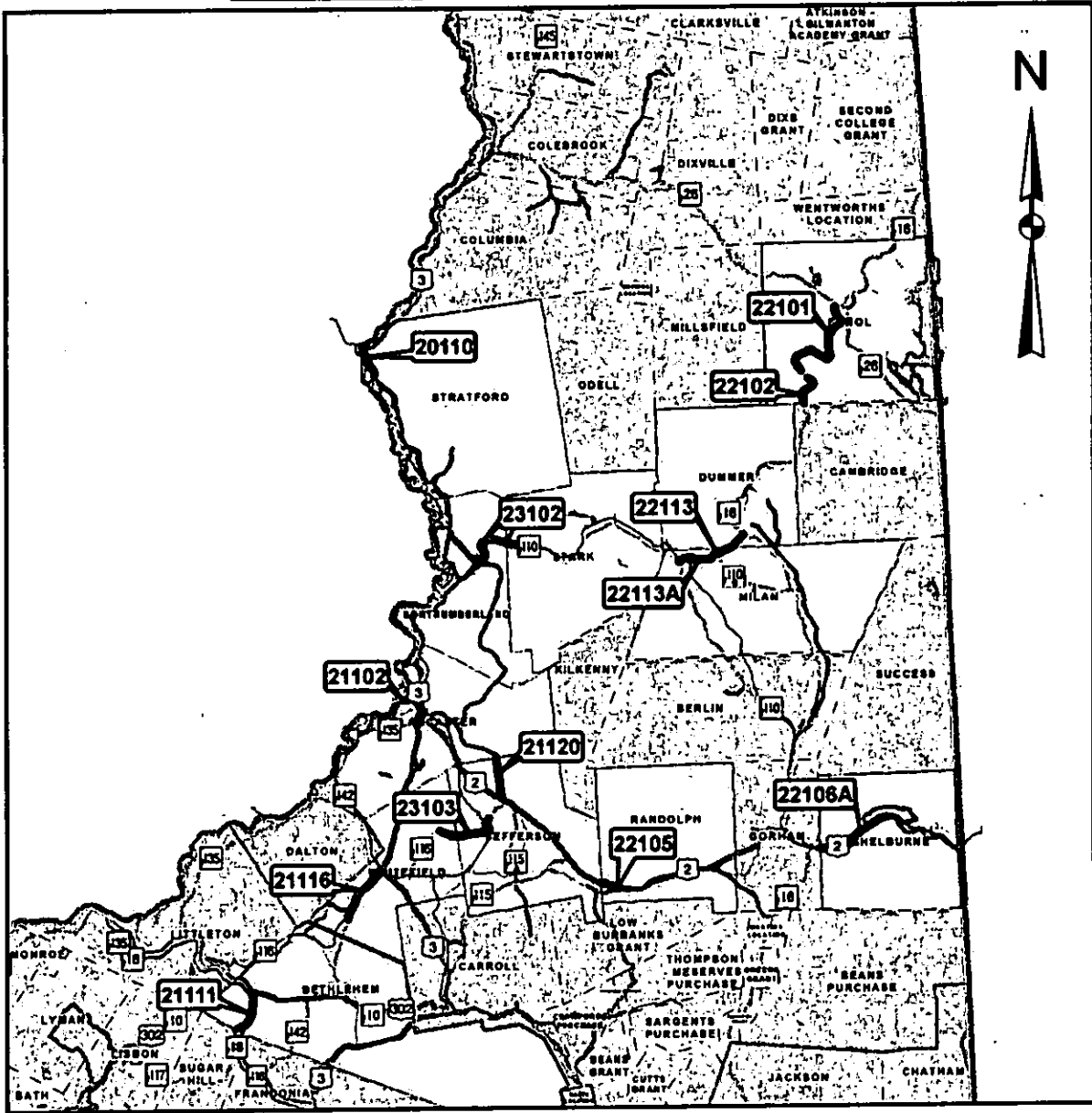
**PROJECT INITIATED:** The project is part of the calendar year 2022 state funded Tier 2, 3, and 4 resurfacing program (Pave-T2-Resurf, Pave-T3/4-Resurf, Pave T3/4-Rehab). The Pavement Management Section reviewed the road segments included in this project and identified ten (10) sections for Light Capital Paving totaling 27.3 miles, one (1) section for Preservation totaling 3.2 miles, one (1) section for Roughness totaling 3.3 miles, and finally, one (1) section has been identified as Major Rehab and will receive a PMRAP treatment.

**PROJECT EXPLANATION:** This project will extend the quality life of the pavement, curb ramps, and drainage; and delay costlier improvements. The sections will be resurfaced via paver shim overlay, high strength inlay and Pug Mill Recycled Asphalt Pavement. Forty (40) sidewalk curb ramps will be upgraded to comply with ADA guidelines. The Contractor will be responsible for striping. All impacted towns and utilities will be notified.

**TRAFFIC IMPLICATION:** Only one section will be paved at a time. One-lane, alternating two-way traffic will be required in order to complete the work. Unless otherwise noted in segment specific requirements, lane closure lengths will be limited to one mile with a two-mile separation required between work zones. Traffic will be restored to normal patterns during non-work hours. Night work will be required on Section 21102. Work zone significance was determined to be non-significant at the December 17, 2020 TCC Meeting.

**FINAL COMPLETION DATE:** September 23, 2022. miles

# District 1 - 16161K



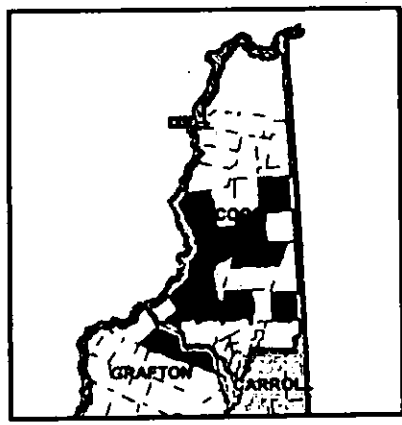
**LEGEND**

- Project 16161K
- Interstates
- US Routes
- State Routes
- Unnumbered Routes
- Urban Compacts

*New Hampshire*  
**DOT**  
 Department of Transportation

**State #: 16161K**

**LOCATION MAP**







# CERTIFICATE OF LIABILITY INSURANCE

DATE (MM/DD/YYYY)

3/1/2022

THIS CERTIFICATE IS ISSUED AS A MATTER OF INFORMATION ONLY AND CONFERS NO RIGHTS UPON THE CERTIFICATE HOLDER. THIS CERTIFICATE DOES NOT AFFIRMATIVELY OR NEGATIVELY AMEND, EXTEND OR ALTER THE COVERAGE AFFORDED BY THE POLICIES BELOW. THIS CERTIFICATE OF INSURANCE DOES NOT CONSTITUTE A CONTRACT BETWEEN THE ISSUING INSURER(S), AUTHORIZED REPRESENTATIVE OR PRODUCER, AND THE CERTIFICATE HOLDER.

**IMPORTANT:** If the certificate holder is an ADDITIONAL INSURED, the policy(ies) must have ADDITIONAL INSURED provisions or be endorsed. If SUBROGATION IS WAIVED, subject to the terms and conditions of the policy, certain policies may require an endorsement. A statement on this certificate does not confer rights to the certificate holder in lieu of such endorsement(s).

PRODUCER Liberty Mutual Insurance Co. National Insurance East 2000 Westwood Dr. Wausau, WI 54401	CONTACT NAME:	Valerie Rocco	
	PHONE (A/C No. Ext.):	513-867-3822	FAX (A/C No.):
www.LibertyMutual.com	E-MAIL ADDRESS:	Oldcastle.certs@LibertyMutual.com	
	INSURER(S) AFFORDING COVERAGE		NAIC #
INSURED Pike Industries, Inc. (020-BEL) 3 Eastgate Park Road Belmont NH 03220	INSURER A:	Liberty Mutual Fire Insurance Company	23035
	INSURER B:	Liberty Insurance Corporation	42404
	INSURER C:		
	INSURER D:		
	INSURER E:		
	INSURER F:		

COVERAGES      CERTIFICATE NUMBER: 66983040      REVISION NUMBER:

THIS IS TO CERTIFY THAT THE POLICIES OF INSURANCE LISTED BELOW HAVE BEEN ISSUED TO THE INSURED NAMED ABOVE FOR THE POLICY PERIOD INDICATED. NOTWITHSTANDING ANY REQUIREMENT, TERM OR CONDITION OF ANY CONTRACT OR OTHER DOCUMENT WITH RESPECT TO WHICH THIS CERTIFICATE MAY BE ISSUED OR MAY PERTAIN, THE INSURANCE AFFORDED BY THE POLICIES DESCRIBED HEREIN IS SUBJECT TO ALL THE TERMS, EXCLUSIONS AND CONDITIONS OF SUCH POLICIES. LIMITS SHOWN MAY HAVE BEEN REDUCED BY PAID CLAIMS.

INSR LTR	TYPE OF INSURANCE	ADD. SUBR INSR / PROD	POLICY NUMBER	POLICY EFF (MM/DD/YYYY)	POLICY EXP (MM/DD/YYYY)	LIMITS
A	<input checked="" type="checkbox"/> COMMERCIAL GENERAL LIABILITY <input type="checkbox"/> CLAIMS-MADE <input checked="" type="checkbox"/> OCCUR <input checked="" type="checkbox"/> Primary/Non-Contributory <input checked="" type="checkbox"/> Separation of Insured GEN'L AGGREGATE LIMIT APPLIES PER: <input type="checkbox"/> POLICY <input checked="" type="checkbox"/> PRO-JECT <input type="checkbox"/> LOC <input type="checkbox"/> OTHER		TB2-C81-004095-111  XCU Coverage Included	9/1/2021	9/1/2022	EACH OCCURRENCE \$2,000,000 DAMAGE TO RENTED PREMISES (EA OCCURRENCE) \$300,000 MED EXP (Any one person) \$50,000 PERSONAL & ADV INJURY \$2,000,000 GENERAL AGGREGATE \$2,000,000 PRODUCTS - COM/OP AGG \$2,000,000 \$
A	<input checked="" type="checkbox"/> AUTOMOBILE LIABILITY <input checked="" type="checkbox"/> ANY AUTO <input type="checkbox"/> OWNED AUTOS ONLY <input type="checkbox"/> SCHEDULED AUTOS <input type="checkbox"/> HIRED AUTOS ONLY <input type="checkbox"/> NON-OWNED AUTOS ONLY <input type="checkbox"/> AUTOS ONLY		AS2-C81-004095-121  AS2-C81-054502-521 Physical Damage only: Comprehensive Ded \$10,000 Collision Ded \$10,000	9/1/2021	9/1/2022	COMBINED SINGLE LIMIT (EA OCCURRENCE) \$2,000,000 BODILY INJURY (Per person) \$ BODILY INJURY (Per accident) \$ PROPERTY DAMAGE (Per accident) \$ \$
A	<input checked="" type="checkbox"/> UMBRELLA LIAB <input checked="" type="checkbox"/> OCCUR <input checked="" type="checkbox"/> EXCESS LIAB <input type="checkbox"/> CLAIMS-MADE DED      RETENTION \$		TL2-681-054523-921 (General Liability)	9/1/2021	9/1/2022	EACH OCCURRENCE \$1,000,000 AGGREGATE \$1,000,000 Products/Completed Ops \$1,000,000
B	<input checked="" type="checkbox"/> WORKERS COMPENSATION AND EMPLOYERS' LIABILITY ANY PROPRIETOR/PARTNER/EXECUTIVE OF FICER MEMBER EXCLUDED? (Mandatory in NH) If yes, describe under DESCRIPTION OF OPERATIONS below	Y/N N	WA7-C8D-004095-021 All except OH, ND, WA, WY  WC7-C81-004095-011 WI, MN	9/1/2021	9/1/2022	<input checked="" type="checkbox"/> PER STATUTE <input type="checkbox"/> OTH-ER E.L. EACH ACCIDENT \$1,000,000 E.L. DISEASE - EA EMPLOYEE \$1,000,000 E.L. DISEASE - POLICY LIMIT \$1,000,000

DESCRIPTION OF OPERATIONS / LOCATIONS / VEHICLES (ACORD 181, Additional Remarks Schedule, may be attached if more space is required)

RE, District 1 N, 16161K.  
 State of New Hampshire-DOT is listed as additional insured with regards to the general liability, automobile liability, and excess liability policies, on a primary and non-contributory basis, where required by written contract.

<b>CERTIFICATE HOLDER</b>  State of New Hampshire-DOT P.O. Box 483 Concord NH 03302	<b>CANCELLATION</b>  SHOULD ANY OF THE ABOVE DESCRIBED POLICIES BE CANCELLED BEFORE THE EXPIRATION DATE THEREOF, NOTICE WILL BE DELIVERED IN ACCORDANCE WITH THE POLICY PROVISIONS.
	AUTHORIZED REPRESENTATIVE  Valerie Rocco

© 1988-2015 ACORD CORPORATION. All rights reserved.



# CERTIFICATE OF LIABILITY INSURANCE

DATE (MM/DD/YYYY)

3/1/2022

THIS CERTIFICATE IS ISSUED AS A MATTER OF INFORMATION ONLY AND CONFERS NO RIGHTS UPON THE CERTIFICATE HOLDER. THIS CERTIFICATE DOES NOT AFFIRMATIVELY OR NEGATIVELY AMEND, EXTEND OR ALTER THE COVERAGE AFFORDED BY THE POLICIES BELOW. THIS CERTIFICATE OF INSURANCE DOES NOT CONSTITUTE A CONTRACT BETWEEN THE ISSUING INSURER(S), AUTHORIZED REPRESENTATIVE OR PRODUCER, AND THE CERTIFICATE HOLDER.

**IMPORTANT:** If the certificate holder is an ADDITIONAL INSURED, the policy(ies) must have ADDITIONAL INSURED provisions or be endorsed. If SUBROGATION IS WAIVED, subject to the terms and conditions of the policy, certain policies may require an endorsement. A statement on this certificate does not confer rights to the certificate holder in lieu of such endorsement(s).

**PRODUCER** Liberty Mutual Insurance Co. National Insurance East  
2000 Westwood Dr.  
Wausau, WI 54401

**CONTACT NAME:** Valerie Reece  
**PHONE (A/C, Hk, Ext):** 513-867-3822 **FAX (A/C, Hk):**  
**E-MAIL ADDRESS:** Oldcastle.certs@LibertyMutual.com

www.LibertyMutual.com

**INSURED**  
Pike Industries, Inc. (020-BEL)  
3 Eastgate Park Road  
Belmont NH 03220

INSURER(S) AFFORDING COVERAGE		NAIC #
<b>INSURER A:</b> Liberty Mutual Fire Insurance Company		23035
<b>INSURER B:</b> Liberty Insurance Corporation		42404
<b>INSURER C:</b>		
<b>INSURER D:</b>		
<b>INSURER E:</b>		
<b>INSURER F:</b>		

**COVERAGES**

CERTIFICATE NUMBER: 66983811

REVISION NUMBER:

THIS IS TO CERTIFY THAT THE POLICIES OF INSURANCE LISTED BELOW HAVE BEEN ISSUED TO THE INSURED NAMED ABOVE FOR THE POLICY PERIOD INDICATED. NOTWITHSTANDING ANY REQUIREMENT, TERM OR CONDITION OF ANY CONTRACT OR OTHER DOCUMENT WITH RESPECT TO WHICH THIS CERTIFICATE MAY BE ISSUED OR MAY PERTAIN, THE INSURANCE AFFORDED BY THE POLICIES DESCRIBED HEREIN IS SUBJECT TO ALL THE TERMS, EXCLUSIONS AND CONDITIONS OF SUCH POLICIES. LIMITS SHOWN MAY HAVE BEEN REDUCED BY PAID CLAIMS.

INSR LTR	TYPE OF INSURANCE	ADD'L SUBR INSD / RVD	POLICY NUMBER	POLICY EFF (MM/DD/YYYY)	POLICY EXP (MM/DD/YYYY)	LIMITS
A	<input checked="" type="checkbox"/> COMMERCIAL GENERAL LIABILITY <input type="checkbox"/> CLAIMS-MADE <input checked="" type="checkbox"/> OCCUR <input checked="" type="checkbox"/> Primary/Non-Contributory <input checked="" type="checkbox"/> Separation of Insured GEN'L AGGREGATE LIMIT APPLIES PER: <input type="checkbox"/> POLICY <input checked="" type="checkbox"/> PRO-JECT <input type="checkbox"/> LOC OTHER:		TB2-C81-004095-111  XCU Coverage Included	9/1/2021	9/1/2022	EACH OCCURRENCE \$2,000,000 DAMAGE TO RENTED PREMISES, (Ea occurrence) \$300,000 MED EXP (Any one person) \$50,000 PERSONAL & ADV INJURY \$2,000,000 GENERAL AGGREGATE \$2,000,000 PRODUCTS - COM/POP AGO \$2,000,000 \$
A	<input checked="" type="checkbox"/> AUTOMOBILE LIABILITY <input checked="" type="checkbox"/> ANY AUTO <input type="checkbox"/> OWNED AUTOS ONLY <input type="checkbox"/> SCHEDULED AUTOS <input type="checkbox"/> HIRED AUTOS ONLY <input type="checkbox"/> NON-OWNED AUTOS ONLY <input type="checkbox"/> AUTOS ONLY		AS2-C81-004095-121  AS2-C81-054502-521 Physical Damage only: Comprehensive Ded \$10,000 Collision Ded \$10,000	9/1/2021	9/1/2022	COMBINED SINGLE LIMIT (Ea accident) \$2,000,000 BODILY INJURY (Per person) \$ BODILY INJURY (Per accident) \$ PROPERTY DAMAGE (Per accident) \$ \$
A	<input type="checkbox"/> UMBRELLA LIAB <input checked="" type="checkbox"/> OCCUR <input checked="" type="checkbox"/> EXCESS LIAB <input type="checkbox"/> CLAIMS-MADE DED RETENTION \$		TL2-881-054523-821 (General Liability)	9/1/2021	9/1/2022	EACH OCCURRENCE \$1,000,000 AGGREGATE \$1,000,000 Products/Completed Ops \$1,000,000
B	<input checked="" type="checkbox"/> WORKERS COMPENSATION AND EMPLOYERS' LIABILITY ANY PROPRIETOR/PARTNER/EXECUTIVE OFFICER/MEMBER EXCLUDED? (Mandatory in NH) If yes, describe under DESCRIPTION OF OPERATIONS below	Y/N N	WA7-C8D-004095-021 All except OH, ND, WA, WY  WC7-C81-004095-011 WI, MN	9/1/2021	9/1/2022	PER STATUTE <input checked="" type="checkbox"/> OTH-ER <input type="checkbox"/> E.L. EACH ACCIDENT \$1,000,000 E.L. DISEASE - EA EMPLOYEE \$1,000,000 E.L. DISEASE - POLICY LIMIT \$1,000,000

DESCRIPTION OF OPERATIONS / LOCATIONS / VEHICLES (ACORD 101, Additional Remarks Schedule, may be attached if more space is required)

RE: District 1 N, 16161K Railroad.  
New Hampshire Central Railroad, their affiliates, successors and assigns and the NH DOT are listed as additional insured with regards to the general liability, automobile liability, and excess liability policies, on a primary and non-contributory basis, where required by written contract.

**CERTIFICATE HOLDER**

New Hampshire Central Railroad  
their affiliates, successors and assigns  
PO Box 165  
North Stratford NH 03590

**CANCELLATION**

SHOULD ANY OF THE ABOVE DESCRIBED POLICIES BE CANCELLED BEFORE THE EXPIRATION DATE THEREOF, NOTICE WILL BE DELIVERED IN ACCORDANCE WITH THE POLICY PROVISIONS.

AUTHORIZED REPRESENTATIVE

Valerie Reece

© 1988-2015 ACORD CORPORATION. All rights reserved.

ACORD 25 (2016/03)

The ACORD name and logo are registered marks of ACORD

RAILROAD PROTECTIVE LIABILITY DECLARATIONS



Issued by Liberty Mutual Fire Insurance Company

Policy Number TE2-681-054678-182 Issuing Office Pittsburgh, PA
Renewal of New Issue Date 03/02/2022
Account Number 8-036771 Sub Account 0024

Named Insured and Mailing Address Franchise
State of New Hampshire Railroad, New Hampshire Central Railroad
Their Affiliates, Successor's and Assigns
PO Box 165
Concord, NH 03302

Form of Business Other

Policy Period: The policy period is from 03/14/2022 to 03/14/2023 12:01 A.M. standard time at the Insured's mailing address.

Job Location:
District 1, 16161K Stratford US3 (Sec 20110), Whitefield NH 116 (Sec 21116), Whitefield-Jefferson NH 116 (Sec 23103)
This project resurfaces 13 sections of various Tier 2, 3 & 4 roads throughout 12 towns in District 1, totaling approx. 36.1 miles.

Designated Contractor: Designated Contractor Mailing Address:
Pike Industries, Inc 3 Eastgate Park Road
Belmont, NH 03220

Name and Address of Involved Governmental Authority or Other Contracting Party:
State of NH - D.O.T.
P.O. Box 486
Concord, NH 03302

In return for the payment of the premium, and subject to all the terms of this policy, we agree with you to provide the insurance as stated in this policy.

LIMITS OF INSURANCE
Each Occurrence Limit \$ 2,000,000
Aggregate Limit \$ 6,000,000

SCHEDULE
The declarations are completed on the accompanying "Declarations Extension Schedule(s)".
Railroad Protective Liability Coverage Part Premium \$ 1,500
Endorsement Premium \$
Other Charge(s) \$
Amount Payable at Inception \$ 1,500
Policywriting Minimum Premium \$

Forms Applicable: See Attached Inventory

Producer 0002 008060
Marsh USA Inc
3560 Lenox Rd Ne Ste 2400
Atlanta, GA 30328-4266

Producer

Countersigned by:

Handwritten signature: Lisa Dunham
Authorized Company Representative



# CERTIFICATE OF LIABILITY INSURANCE

DATE (MM/DD/YYYY)

3/1/2022

THIS CERTIFICATE IS ISSUED AS A MATTER OF INFORMATION ONLY AND CONFERS NO RIGHTS UPON THE CERTIFICATE HOLDER. THIS CERTIFICATE DOES NOT AFFIRMATIVELY OR NEGATIVELY AMEND, EXTEND OR ALTER THE COVERAGE AFFORDED BY THE POLICIES BELOW. THIS CERTIFICATE OF INSURANCE DOES NOT CONSTITUTE A CONTRACT BETWEEN THE ISSUING INSURER(S), AUTHORIZED REPRESENTATIVE OR PRODUCER, AND THE CERTIFICATE HOLDER.

**IMPORTANT:** If the certificate holder is an ADDITIONAL INSURED, the policy(ies) must have ADDITIONAL INSURED provisions or be endorsed. If SUBROGATION IS WAIVED, subject to the terms and conditions of the policy, certain policies may require an endorsement. A statement on this certificate does not confer rights to the certificate holder in lieu of such endorsement(s).

PRODUCER Liberty Mutual Insurance Co. National Insurance East 2000 Westwood Dr. Wausau, WI 54401	CONTACT NAME: Valerie Reece	FAX (A/C, No):
	PHONE (A/C, No, Ext): 513-867-3822	(A/C, No):
ADDRESS: Oldcastle.certs@LibertyMutual.com		
INSURER(S) AFFORDING COVERAGE		NAIC #
INSURER A: Liberty Mutual Fire Insurance Company		23035
INSURER B: Liberty Insurance Corporation		42404
INSURER C:		
INSURER D:		
INSURER E:		
INSURER F:		

www.LibertyMutual.com

## INSURED

Pike Industries, Inc. (020-BEL)  
3 Eastgate Park Road  
Belmont NH 03220

## COVERAGES

CERTIFICATE NUMBER: 66983903

REVISION NUMBER:

THIS IS TO CERTIFY THAT THE POLICIES OF INSURANCE LISTED BELOW HAVE BEEN ISSUED TO THE INSURED NAMED ABOVE FOR THE POLICY PERIOD INDICATED. NOTWITHSTANDING ANY REQUIREMENT, TERM OR CONDITION OF ANY CONTRACT OR OTHER DOCUMENT WITH RESPECT TO WHICH THIS CERTIFICATE MAY BE ISSUED OR MAY PERTAIN, THE INSURANCE AFFORDED BY THE POLICIES DESCRIBED HEREIN IS SUBJECT TO ALL THE TERMS, EXCLUSIONS AND CONDITIONS OF SUCH POLICIES. LIMITS SHOWN MAY HAVE BEEN REDUCED BY PAID CLAIMS.

INSR LTR	TYPE OF INSURANCE	ADD'L INSR	INSR	WVD	POLICY NUMBER	POLICY EFF (MM/DD/YYYY)	POLICY EXP (MM/DD/YYYY)	LIMITS
A	<input checked="" type="checkbox"/> COMMERCIAL GENERAL LIABILITY <input type="checkbox"/> CLAIMS-MADE <input checked="" type="checkbox"/> OCCUR <input checked="" type="checkbox"/> Primary/Non-Contributory <input checked="" type="checkbox"/> Separation of Insured GEN'L AGGREGATE LIMIT APPLIES PER: <input type="checkbox"/> POLICY <input checked="" type="checkbox"/> PRO-JECT <input type="checkbox"/> LOC OTHER:	<input checked="" type="checkbox"/>	<input checked="" type="checkbox"/>		TB2-C81-004095-111  XCU Coverage Included	9/1/2021	9/1/2022	EACH OCCURRENCE DAMAGE TO RENTED PREMISES (EA occurrence) \$2,000,000 PREMISES (EA occurrence) \$300,000 MED EXP (Any one person) \$50,000 PERSONAL & ADV INJURY \$2,000,000 GENERAL AGGREGATE \$6,000,000 PRODUCTS - COMPROP AGG \$6,000,000 \$
A	<input checked="" type="checkbox"/> AUTOMOBILE LIABILITY <input checked="" type="checkbox"/> ANY AUTO <input type="checkbox"/> OWNED AUTOS ONLY <input type="checkbox"/> SCHEDULED AUTOS <input type="checkbox"/> HIRED AUTOS ONLY <input type="checkbox"/> NON-OWNED AUTOS ONLY	<input checked="" type="checkbox"/>	<input checked="" type="checkbox"/>		AS2-C81-004095-121  AS2-C81-054502-521 Physical Damage only: Comprehensive Ded \$10,000 Collision Ded \$10,000	9/1/2021	9/1/2022	COMBINED SINGLE LIMIT (EA accident) \$2,000,000 BODILY INJURY (Per person) \$ BODILY INJURY (Per accident) \$ PROPERTY DAMAGE (Per accident) \$ \$
A	<input checked="" type="checkbox"/> UMBRELLA LIAB <input checked="" type="checkbox"/> EXCESS LIAB DED RETENTION \$	<input checked="" type="checkbox"/>	<input checked="" type="checkbox"/>		TL2-681-054523-921 (General Liability)	9/1/2021	9/1/2022	EACH OCCURRENCE \$1,000,000 AGGREGATE \$1,000,000 Products/Completed Ops \$1,000,000
B	WORKERS COMPENSATION AND EMPLOYERS' LIABILITY ANY PROPRIETOR/PARTNER/EXECUTIVE OFFICER/MEMBER EXCLUDED? (Mandatory in NH) If yes, describe under DESCRIPTION OF OPERATIONS below	<input checked="" type="checkbox"/>		Y/N N	WA7-C8D-004095-021 All except OH, ND, WA, WY  WC7-C81-004095-011 WI, MN	9/1/2021	9/1/2022	PER STATUTE OTH-ER E.L. EACH ACCIDENT \$1,000,000 E.L. DISEASE - EA EMPLOYEE \$1,000,000 E.L. DISEASE - POLICY LIMIT \$1,000,000

DESCRIPTION OF OPERATIONS / LOCATIONS / VEHICLES (ACORD 101, Additional Remarks Schedule, may be attached if more space is required)

RE: District 1 N, 16161K Railroad.  
St. Lawrence & Atlantic Railroad c/o Genessee & Wyoming Railroad Services, Inc. their affiliates, successors and assigns and the NH DOT are listed as additional insured with regards to the general liability, automobile liability, and excess liability policies, on a primary and non-contributory basis where required by written contract.  
Waiver of subrogation is included in favor of the additional insured, where required by written contract, and where applicable by law.

## CERTIFICATE HOLDER

## CANCELLATION

St. Lawrence & Atlantic Railroad  
c/o Genessee & Wyoming Railroad Services, Inc.  
their affiliates, successors and assigns  
Attn: Jason Birkel  
13901 Sutton Park Drive South, Suite 160  
Jacksonville FL 32224

SHOULD ANY OF THE ABOVE DESCRIBED POLICIES BE CANCELLED BEFORE THE EXPIRATION DATE THEREOF, NOTICE WILL BE DELIVERED IN ACCORDANCE WITH THE POLICY PROVISIONS.

AUTHORIZED REPRESENTATIVE

Valerie Reece

*Valerie P. Reece*

© 1988-2015 ACORD CORPORATION. All rights reserved.

ACORD 25 (2016/03)

The ACORD name and logo are registered marks of ACORD

RAILROAD PROTECTIVE LIABILITY DECLARATIONS



Issued by Liberty Mutual Fire Insurance Company

Policy Number TE2-681-054678-192  
Renewal of NEW  
Account Number 8-036771

Issuing Office Pittsburgh, PA  
Issue Date 03/02/2022  
Sub Account 0000

Named Insured and Mailing Address  
St Lawrence & Atlantic Railroad Company  
13901 Sutton Park Drive South, Suite 160  
Jacksonville, FL 32224

Franchise

Form of Business Other

Policy Period: The policy period is from 03/14/2022 to 03/14/2023 12:01 A.M. standard time at the Insured's mailing address.

Job Location:

District 1, 16161K Stratford US3 (Sec 20110), Milan-Dummer NH 110A (Sec 22113); Northumberland-Stark NH110 (Sec 23102) - This project resurfaces 13 sections of various Tier 2, 3 & 4 roads throughout 12 towns in District 1, totaling approx. 36.1 miles.

Designated Contractor:  
Pike Industries, Inc

Designated Contractor Mailing Address:  
3 Eastgate Park Road  
Belmont, NH 03220

Name and Address of Involved Governmental Authority or Other Contracting Party:

State of NH - D.O.T.  
P.O. Box 486  
Concord, NH 03302

In return for the payment of the premium, and subject to all the terms of this policy, we agree with you to provide the insurance as stated in this policy.

LIMITS OF INSURANCE

Each Occurrence Limit \$ 2,000,000  
Aggregate Limit \$ 6,000,000

SCHEDULE

The declarations are completed on the accompanying "Declarations Extension Schedule(s)".

Railroad Protective Liability Coverage Part Premium \$ 1,500  
Endorsement Premium \$  
Other Charge(s) \$  
Amount Payable at Inception \$ 1,500

Policywriting Minimum Premium \$

Forms Applicable: See Attached Inventory

Producer 0002 008060  
MARSH USA INC  
3560 LENOX RD NE STE 2400  
ATLANTA, GA 30326-4266

Countersigned By:

Authorized Representative

**OWNERS AND CONTRACTORS PROTECTIVE  
LIABILITY DECLARATIONS**



Issued by Liberty Mutual Fire Insurance Company

Policy Number TF2-681-054678-162  
Renewal of New  
Account Number 8-036771

Issuing Office Pittsburgh, PA  
Issue Date 03/02/2022  
Sub Account 0024

Named Insured and Mailing Address  
State of New Hampshire - D.O.T.  
PO Box 483  
Concord, NH 03302

Franchise

Form of Business Other

Policy Period: The policy period is from 03/14/2022 to 03/14/2023 12:01 A.M. standard time at the Insured's mailing address.

Designated Contractor: Pike Industries, Inc.,

Mailing Address: 3 Eastgate Park Road  
Belmont, NH 03220

Location of Coverage Operations: District 1 N, 16161K This project resurfaces 13 sections of various Tier 2, 3, & 4 roads throughout 12 towns in District 1, totaling approx 36.1 miles

In return for the payment of the premium, and subject to all the terms of this policy, we agree with you to provide the insurance as stated in this policy.

**LIMITS OF INSURANCE**

Each Occurrence Limit \$ 3,000,000  
Aggregate Limit \$ 3,000,000

**SCHEDULE**

The declarations are completed on the accompanying "Declarations Extension Schedule(s)".

Owners and Contractors Protective Liability Coverage Part Premium \$ 1,500  
Endorsement Premium \$  
Total Estimated Premium \$ 1,500  
Other Charges(s) \$

Policywriting Minimum Premium \$

Forms Applicable: See Attached Inventory

Producer 0002 008060  
Marsh USA Inc  
3560 Lenox Rd NE Ste 2400  
Atlanta, GA 30326-4266

Producer

Countersigned By:

Authorized Representative

Endorsement number 001 for policy number TF2-681-054678-162

Named Insured State of New Hampshire - D.O.T. and State of Vermont

This endorsement is effective 03/14/2022 and will terminate with the policy. It is issued by the company designated in the Declaration. All other provisions of the policy remain unchanged.

**THIS ENDORSEMENT CHANGES THE POLICY. PLEASE READ IT CAREFULLY.**

### **Change Endorsement**

Owners And Contractors Protective Liability Declarations, Form LC 00 09 06 13, is amended as follows:

The Named Insured is changed to:

State of New Hampshire - D.O.T. and State of Vermont

Formerly:

State of New Hampshire - D.O.T.