



# STATE OF NEW HAMPSHIRE

## DEPARTMENT OF STATE

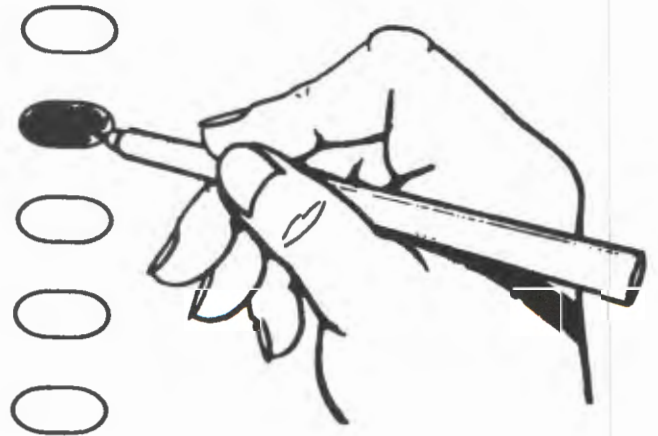
# INSTRUCTIONS TO VOTERS

## GENERAL ELECTION

Announce your name and address and present proof of identity to the ballot clerk who will give you a ballot.

Go alone to a voting booth and mark your ballot. If you are unable to do this, ask the moderator for assistance.

**To Vote** – Completely fill in the oval to the right of your choice. For each office vote for not more than the number of candidates stated in the sentence: “Vote for not more than \_\_\_\_.” If you vote for more than the stated number of candidates, your vote for that office will not be counted.



**To Vote by Write-In** – To vote for a person whose name is not printed on the ballot for a particular office, write the name of the person in the “write-in” space AND completely fill in the oval to the right of your choice.

To Vote on a question on the ballot, completely fill in the oval next to YES or NO indicating your choice on that question.

**If you spoil a ballot, return it to the moderator and receive another**

After marking your ballot, proceed to the checkout area and insert your ballot into the voting machine

**USE ONLY THE SPECIAL PEN OR PENCIL PROVIDED**