



STATE OF NEW HAMPSHIRE

DEPARTMENT OF STATE

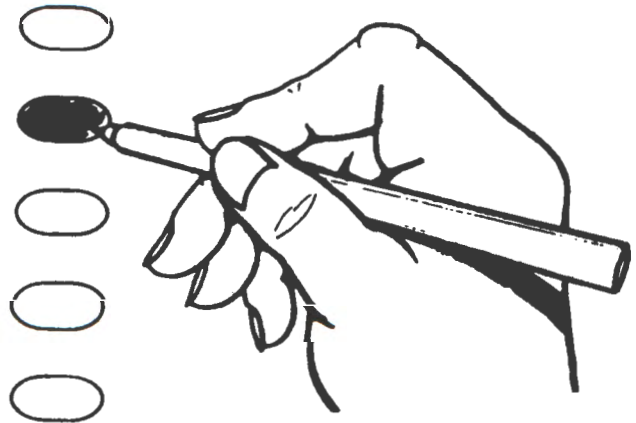
INSTRUCTIONS TO VOTERS

GENERAL ELECTION

Announce your name and address and present proof of identity to the ballot clerk who will give you a ballot.

Go alone to a voting booth and mark your ballot. If you are unable to do this, ask the moderator for assistance.

To Vote – Completely fill in the oval to the right of your choice. For each office vote for not more than the number of candidates stated in the sentence: “Vote for not more than ____.” If you vote for more than the stated number of candidates, your vote for that office will not be counted.



To Vote by Write-In – To vote for a person whose name is not printed on the ballot for a particular office, write the name of the person in the “write-in” space provided for that office.

To Vote on a question on the ballot, make a cross in the box next to YES or NO indicating your choice on that question.

If you spoil a ballot, return it to the moderator and receive another

After marking your ballot, fold it as it was folded, announce your name to the town clerk and hand your ballot to the moderator