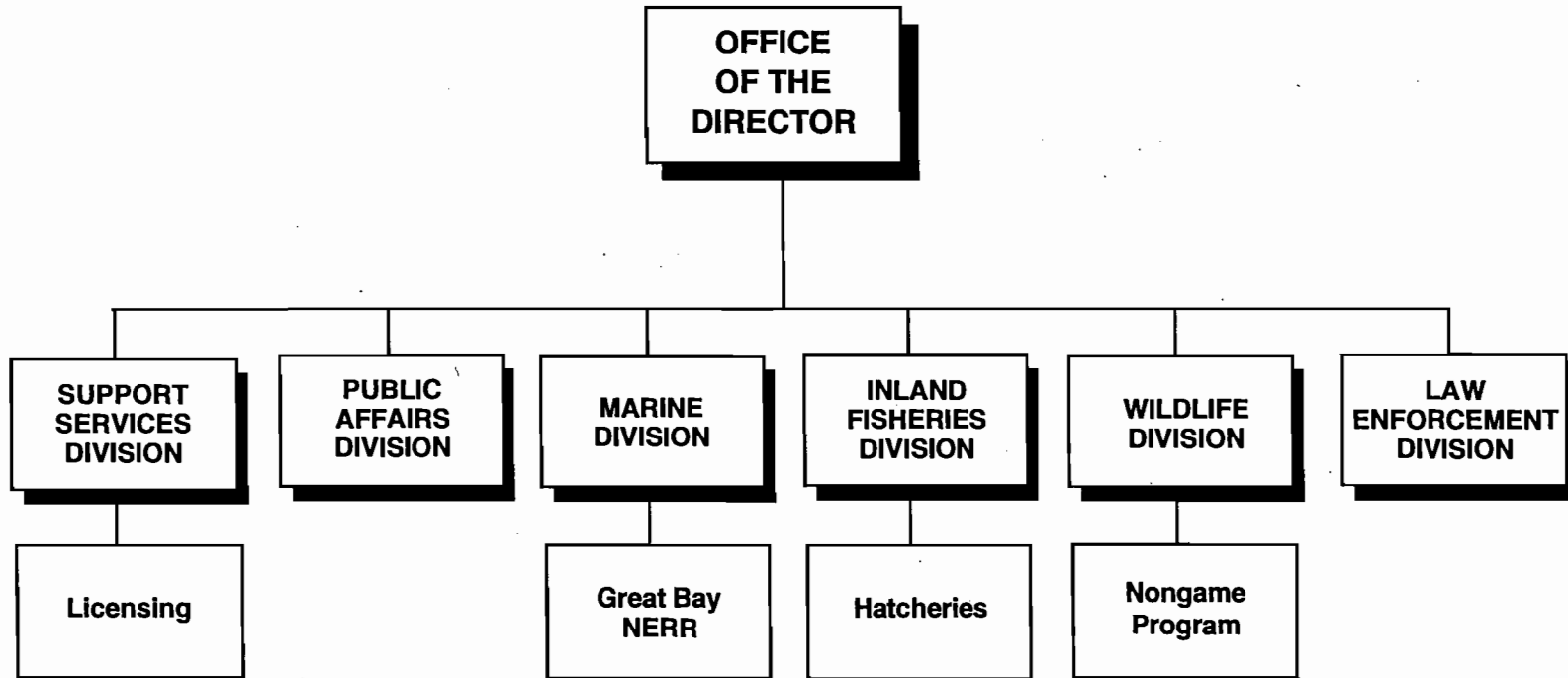
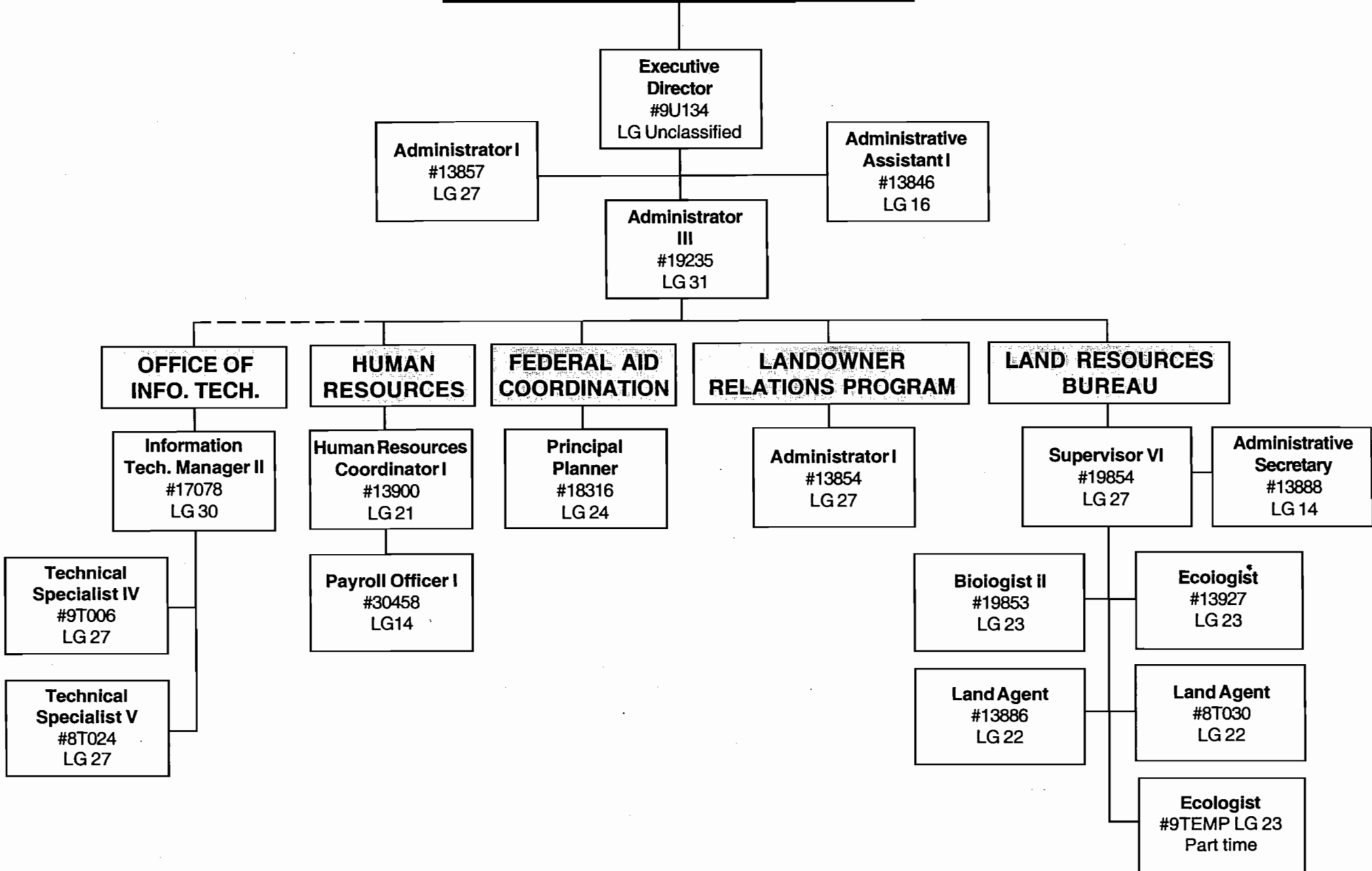


New Hampshire Fish & Game Department



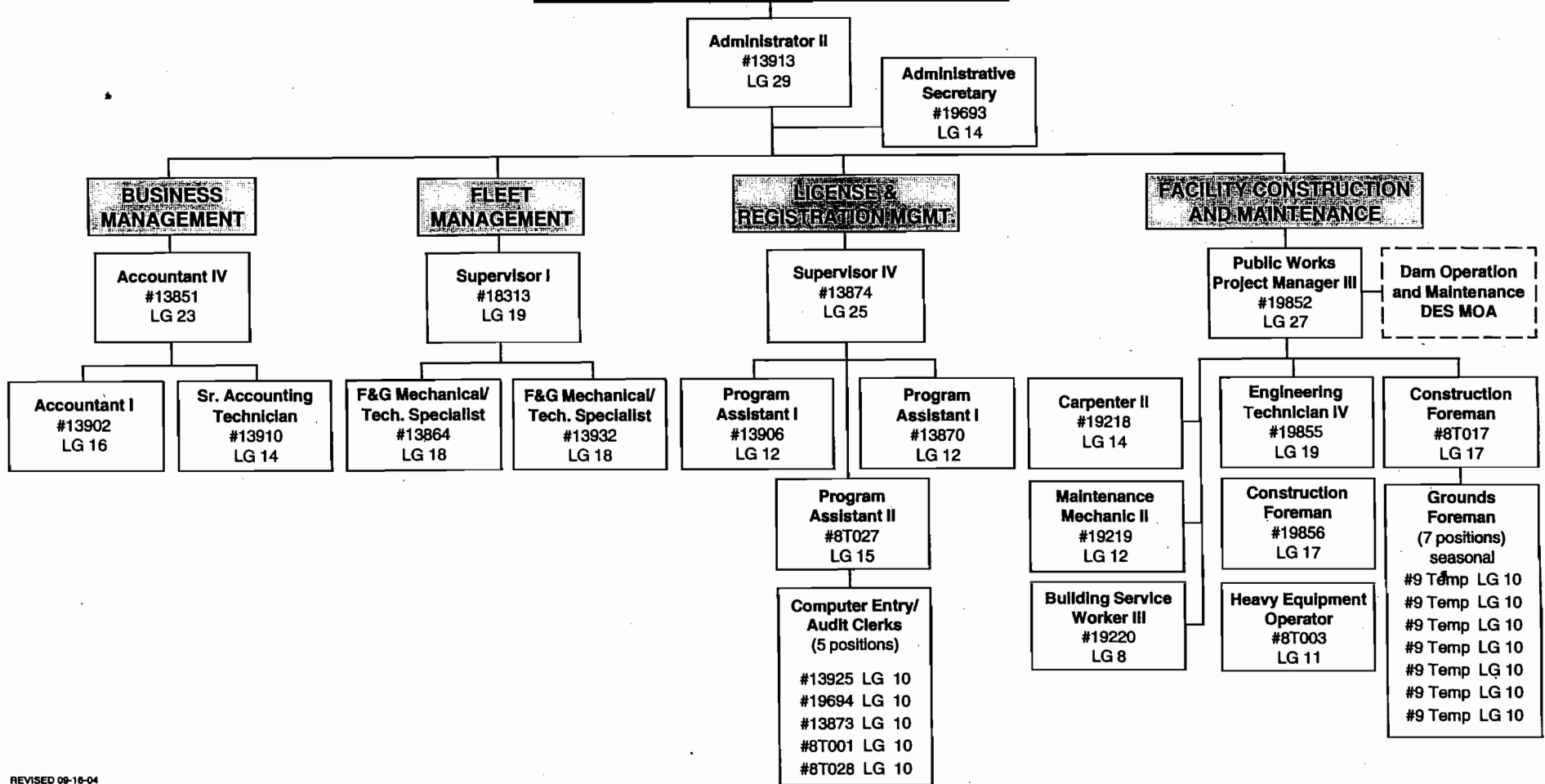
New Hampshire Fish & Game Department

OFFICE OF THE DIRECTOR



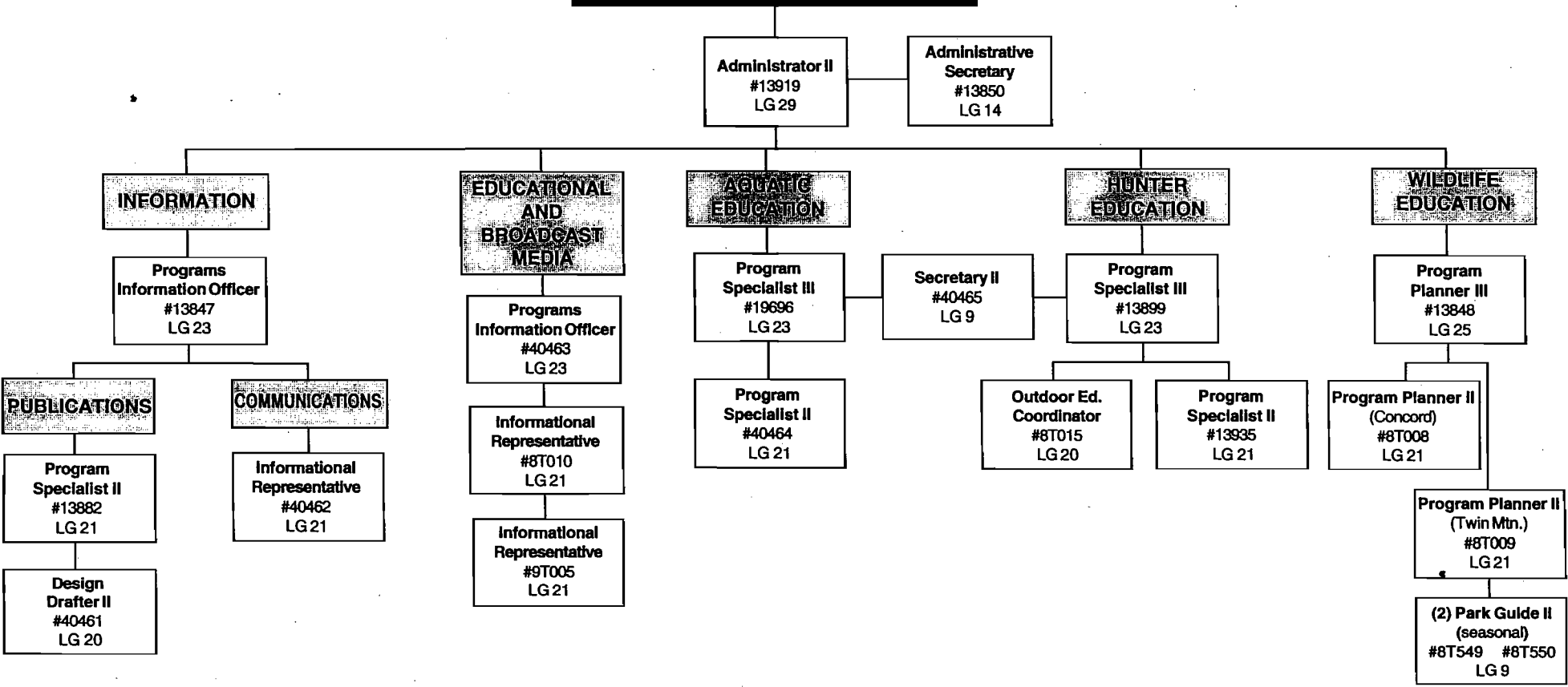
New Hampshire Fish & Game Department

SUPPORT SERVICES DIVISION



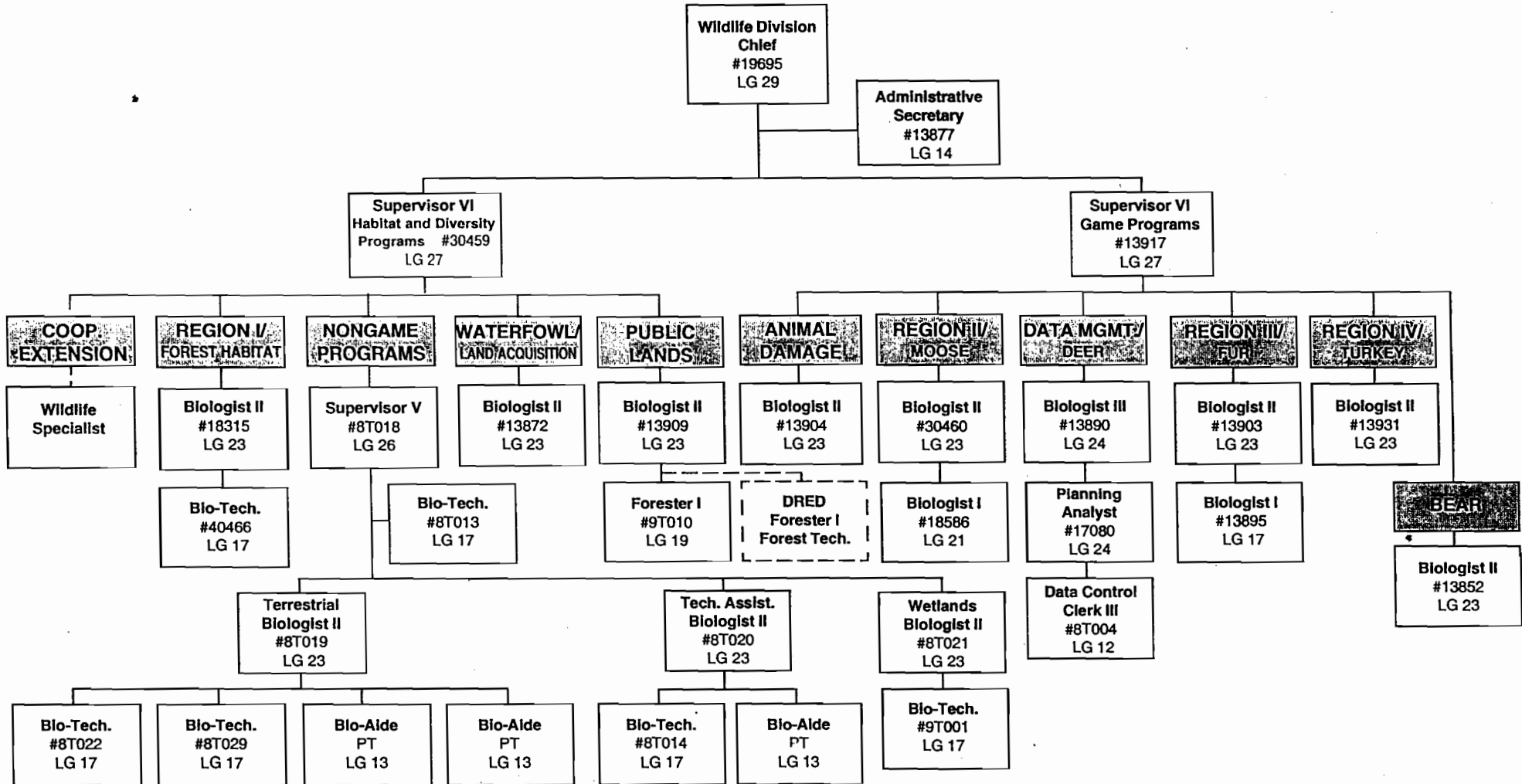
New Hampshire Fish & Game Department

PUBLIC AFFAIRS DIVISION



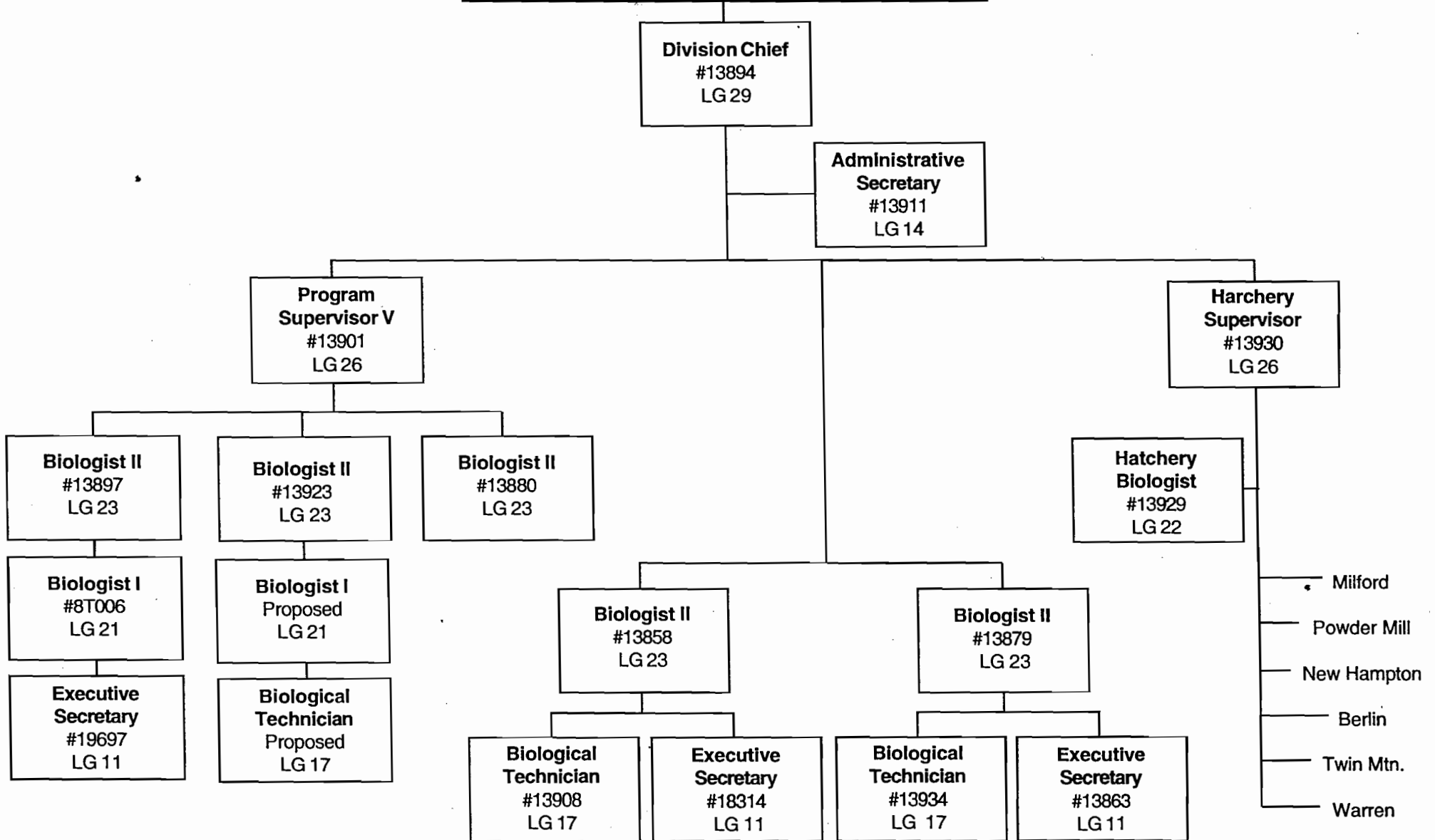
New Hampshire Fish & Game Department

WILDLIFE DIVISION



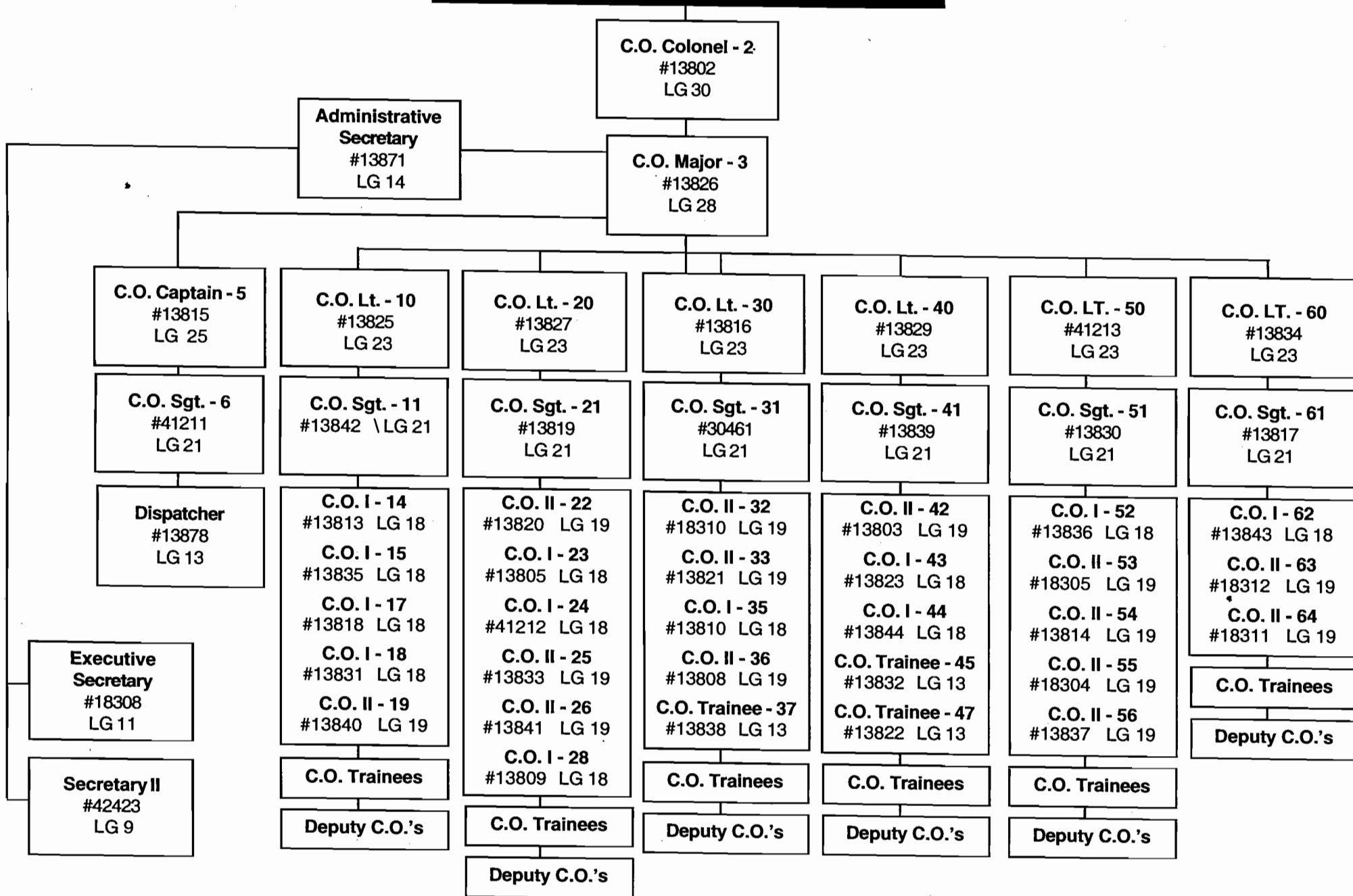
New Hampshire Fish & Game Department

INLAND FISHERIES DIVISION



New Hampshire Fish & Game Department

LAW ENFORCEMENT DIVISION



New Hampshire Fish & Game Department

MARINE DIVISION

Administrator II
#13918
LG 29

Executive Secretary
#19698
LG 11

MARINE

GREAT BAY

Biologist III
#13933
LG 24

Biologist II
#13922
LG 23

Biologist III
#18938
LG 24

Biologist II Research Coordinator
proposed LG 23

FISHERIES STATISTICS

MARINE ANADROMOUS FISHERIES UNIT

INVERTEBRATE FISHERIES UNIT

Supervisor III
#9T003
LG 23

Biologist I
#13937
LG 21

Biologist I
#8T007
LG 21

Temporary Biological Aides
9 TEMP (seasonal)
LG 13

Asst. Education Coordinator
#9T013
LG 20

Volunteer Coordinator
#9T004
LG 19

Program Specialist II
#9T012 LG 21
R. Stevens

Biologist I
#8T026
LG 21

Biological Technician
#9T011
LG 17

Temp. Program Assistant I
(part-time)
LG 12

2 - Temporary Park Guide II
(seasonal)
LG 9

Biologist Technician
#8T025
LG 17

Temporary Biological Aides
(seasonal)
LG 13