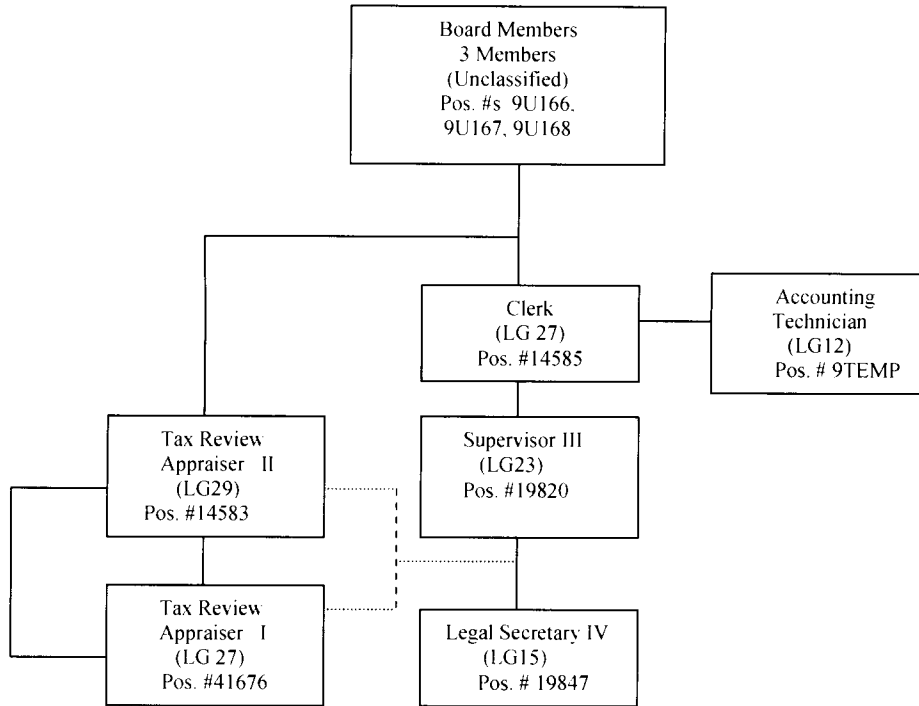


Board of Tax and Land Appeals
Organizational Chart



Authorized Personnel & Vacancies

Board Members: Michele E. LeBrun, Chair
 Albert F. Shamash, Esq.
 Theresa M. Walker

Clerk:	Anne Stelmach	Legal Secretary IV:	Lisa Moquin
Supervisor III:	Melanie Ekstrom	Accounting Technician:	Nicole Foote
Tax Review Appraiser II:	Cynthia Brown	Tax Review Appraiser:	Vacant

Revised: April, 2012

RECEIVED
 DEC 17 2014
 NEW HAMPSHIRE
 DEPARTMENT OF STATE